



RoHS TEST REPORT

Applicant : Wenzhou Hexi Electronic Technology Co., Ltd

Address : Nanping Tower, Kunyang Town, Pingyang County, Wenzhou City, Zhejiang Province, CN, 325400

Manufacturer : Wenzhou Hexi Electronic Technology Co., Ltd

Address : Nanping Tower, Kunyang Town, Pingyang County, Wenzhou City, Zhejiang Province, CN, 325400

The following sample(s) was / were submitted and identified on behalf of the clients as :

Sample Name : Neck massager

Sample Model : THY-988

Trademark: **TAHATH**

Sample Received Date : Aug. 01, 2020

Testing Period : Aug. 01, 2020 To Aug. 07, 2020

Test Requested : Selected test(s) as requested by client

Test Method : Please refer to next page(s).

Test Result : Please refer to next page(s).

Conclusion : Based on the performed tests on submitted sample(s), the results of Lead, Mercury, Cadmium, Hexavalent chromium, Polybrominated biphenyls (PBBs), Polybrominated diphenyl ethers (PBDEs) and Phthalates such as Bis(2-ethylhexyl) phthalate (DEHP) , Butyl benzyl phthalate (BBP), Dibutyl phthalate (DBP) , and Diisobutyl phthalate (DIBP) comply with the limits as set by RoHS Directive (EU) 2015/863 amending Annex II to Directive 2011/65/EU.

Tested By: Kayla

Date: Aug. 31, 2020

Reviewed By: Megan

Date: Aug. 31, 2020

Approved By: Thomas



Date: Aug. 31, 2020

Sample Description:

No.	Name
1	RED PLASTIC
2	GREY PLASTIC
3	YELLOW PLASTIC
4	WIRE
5	WHITE WIRE
6	RED WIRE
7	BLUE WIRE
8	BLACK WIRE
9	GREEN WIRE
10	SCREW
11	SMD LED
12	PCB
13	WIRE
14	BLACK PLASTIC
15	IC
16	SMD CAPACITOR
17	SMD RESISTOR
18	DIODE
19	SMD TRANSISTOR
20	SILVER METAL
21	SMD INDUCTOR
22	METAL

23	SMD RESISTOR
24	SMD CAPACITOR
25	TRIODE
26	PCB
27	WHITE PLASTIC
28	SILVER METAL

Test Result(No.1):

Test Item(s)	Unit	Test Method(Reference)	Result	MDL	Limit
Cadmium(Cd)	mg/kg	EN 62321-5: 2013, ICP-OES	N.D.	2	100
Lead(Pb)	mg/kg	EN 62321-5: 2013, ICP-OES	N.D.	2	1000
Mercury(Hg)	mg/kg	EN 62321-4:2013+A1:2017, ICP-OES	N.D.	2	1000
Hexavalent Chromium(CrVI)	mg/kg	EN 62321-7-1:2015, EN 62321-7-2:2017, UV-Vis	N.D.	2	1000
Sum of PBBs	mg/kg	EN 62321-6: 2015, GC-MS	N.D.	--	1000
Monobromobiphenyl	mg/kg	EN 62321-6: 2015, GC-MS	N.D.	5	--
Dibromobiphenyl	mg/kg	EN 62321-6: 2015, GC-MS	N.D.	5	--
Tribromobiphenyl	mg/kg	EN 62321-6: 2015, GC-MS	N.D.	5	--
Tetrabromobiphenyl	mg/kg	EN 62321-6: 2015, GC-MS	N.D.	5	--
Pentabromobiphenyl	mg/kg	EN 62321-6: 2015, GC-MS	N.D.	5	--
Hexabromobiphenyl	mg/kg	EN 62321-6: 2015, GC-MS	N.D.	5	--
Heptabromobiphenyl	mg/kg	EN 62321-6: 2015, GC-MS	N.D.	5	--
Octabromobiphenyl	mg/kg	EN 62321-6: 2015, GC-MS	N.D.	5	--
Nonabromobiphenyl	mg/kg	EN 62321-6: 2015, GC-MS	N.D.	5	--
Decabromobiphenyl	mg/kg	EN 62321-6: 2015, GC-MS	N.D.	5	--
Sum of PBDEs	mg/kg	EN 62321-6: 2015, GC-MS	N.D.	5	1000
Monobromodiphenyl ether	mg/kg	EN 62321-6: 2015, GC-MS	N.D.	5	--
Dibromodiphenyl ether	mg/kg	EN 62321-6: 2015, GC-MS	N.D.	5	--
Tribromodiphenyl ether	mg/kg	EN 62321-6: 2015, GC-MS	N.D.	5	--
Tetrabromodiphenyl ether	mg/kg	EN 62321-6: 2015, GC-MS	N.D.	5	--
Pentabromodiphenyl ether	mg/kg	EN 62321-6: 2015, GC-MS	N.D.	5	--
Hexabromodiphenyl ether	mg/kg	EN 62321-6: 2015, GC-MS	N.D.	5	--
Heptabromodiphenyl ether	mg/kg	EN 62321-6: 2015, GC-MS	N.D.	5	--
Octabromodiphenyl ether	mg/kg	EN 62321-6: 2015, GC-MS	N.D.	5	--
Nonabromodiphenyl ether	mg/kg	EN 62321-6: 2015, GC-MS	N.D.	5	--
--Decabromodiphenyl ether	mg/kg	EN 62321-6: 2015, GC-MS	N.D.	5	--
Dibutyl Phthalate(DBP)	mg/kg	EN 62321-8:2017, GC-MS	N.D.	50	1000
Benzylbutyl Phthalate(BBP)	mg/kg	EN 62321-8:2017, GC-MS	N.D.	50	1000
Di-(2-ethylhexyl) Phthalate(DEHP)	mg/kg	EN 62321-8:2017, GC-MS	N.D.	50	1000
Diisobutyl phthalate (DIBP)	mg/kg	EN 62321-8:2017, GC-MS	N.D.	50	1000

Test Result(No.2):

Test Item(s)	Unit	Test Method(Reference)	Result	MDL	Limit
Cadmium(Cd)	mg/kg	EN 62321-5: 2013, ICP-OES	N.D.	2	100
Lead(Pb)	mg/kg	EN 62321-5: 2013, ICP-OES	N.D.	2	1000
Mercury(Hg)	mg/kg	EN 62321-4:2013+A1:2017, ICP-OES	N.D.	2	1000
Hexavalent Chromium(CrVI)	mg/kg	EN 62321-7-1:2015, EN 62321-7-2:2017, UV-Vis	N.D.	2	1000
Sum of PBBs	mg/kg	EN 62321-6: 2015, GC-MS	N.D.	--	1000
Monobromobiphenyl	mg/kg	EN 62321-6: 2015, GC-MS	N.D.	5	--
Dibromobiphenyl	mg/kg	EN 62321-6: 2015, GC-MS	N.D.	5	--
Tribromobiphenyl	mg/kg	EN 62321-6: 2015, GC-MS	N.D.	5	--
Tetrabromobiphenyl	mg/kg	EN 62321-6: 2015, GC-MS	N.D.	5	--
Pentabromobiphenyl	mg/kg	EN 62321-6: 2015, GC-MS	N.D.	5	--
Hexabromobiphenyl	mg/kg	EN 62321-6: 2015, GC-MS	N.D.	5	--
Heptabromobiphenyl	mg/kg	EN 62321-6: 2015, GC-MS	N.D.	5	--
Octabromobiphenyl	mg/kg	EN 62321-6: 2015, GC-MS	N.D.	5	--
Nonabromobiphenyl	mg/kg	EN 62321-6: 2015, GC-MS	N.D.	5	--
Decabromobiphenyl	mg/kg	EN 62321-6: 2015, GC-MS	N.D.	5	--
Sum of PBDEs	mg/kg	EN 62321-6: 2015, GC-MS	N.D.	5	1000
Monobromodiphenyl ether	mg/kg	EN 62321-6: 2015, GC-MS	N.D.	5	--
Dibromodiphenyl ether	mg/kg	EN 62321-6: 2015, GC-MS	N.D.	5	--
Tribromodiphenyl ether	mg/kg	EN 62321-6: 2015, GC-MS	N.D.	5	--
Tetrabromodiphenyl ether	mg/kg	EN 62321-6: 2015, GC-MS	N.D.	5	--
Pentabromodiphenyl ether	mg/kg	EN 62321-6: 2015, GC-MS	N.D.	5	--
Hexabromodiphenyl ether	mg/kg	EN 62321-6: 2015, GC-MS	N.D.	5	--
Heptabromodiphenyl ether	mg/kg	EN 62321-6: 2015, GC-MS	N.D.	5	--
Octabromodiphenyl ether	mg/kg	EN 62321-6: 2015, GC-MS	N.D.	5	--
Nonabromodiphenyl ether	mg/kg	EN 62321-6: 2015, GC-MS	N.D.	5	--
--Decabromodiphenyl ether	mg/kg	EN 62321-6: 2015, GC-MS	N.D.	5	--
Dibutyl Phthalate(DBP)	mg/kg	EN 62321-8:2017, GC-MS	N.D.	50	1000
Benzylbutyl Phthalate(BBP)	mg/kg	EN 62321-8:2017, GC-MS	N.D.	50	1000
Di-(2-ethylhexyl) Phthalate(DEHP)	mg/kg	EN 62321-8:2017, GC-MS	N.D.	50	1000
Diisobutyl phthalate (DIBP)	mg/kg	EN 62321-8:2017, GC-MS	N.D.	50	1000

Test Result(No.3):

Test Item(s)	Unit	Test Method(Reference)	Result	MDL	Limit
Cadmium(Cd)	mg/kg	EN 62321-5: 2013, ICP-OES	N.D.	2	100
Lead(Pb)	mg/kg	EN 62321-5: 2013, ICP-OES	N.D.	2	1000
Mercury(Hg)	mg/kg	EN 62321-4:2013+A1:2017, ICP-OES	N.D.	2	1000
Hexavalent Chromium(CrVI)	mg/kg	EN 62321-7-1:2015, EN 62321-7-2:2017, UV-Vis	N.D.	2	1000
Sum of PBBs	mg/kg	EN 62321-6: 2015, GC-MS	N.D.	--	1000
Monobromobiphenyl	mg/kg	EN 62321-6: 2015, GC-MS	N.D.	5	--
Dibromobiphenyl	mg/kg	EN 62321-6: 2015, GC-MS	N.D.	5	--
Tribromobiphenyl	mg/kg	EN 62321-6: 2015, GC-MS	N.D.	5	--
Tetrabromobiphenyl	mg/kg	EN 62321-6: 2015, GC-MS	N.D.	5	--
Pentabromobiphenyl	mg/kg	EN 62321-6: 2015, GC-MS	N.D.	5	--
Hexabromobiphenyl	mg/kg	EN 62321-6: 2015, GC-MS	N.D.	5	--
Heptabromobiphenyl	mg/kg	EN 62321-6: 2015, GC-MS	N.D.	5	--
Octabromobiphenyl	mg/kg	EN 62321-6: 2015, GC-MS	N.D.	5	--
Nonabromobiphenyl	mg/kg	EN 62321-6: 2015, GC-MS	N.D.	5	--
Decabromobiphenyl	mg/kg	EN 62321-6: 2015, GC-MS	N.D.	5	--
Sum of PBDEs	mg/kg	EN 62321-6: 2015, GC-MS	N.D.	5	1000
Monobromodiphenyl ether	mg/kg	EN 62321-6: 2015, GC-MS	N.D.	5	--
Dibromodiphenyl ether	mg/kg	EN 62321-6: 2015, GC-MS	N.D.	5	--
Tribromodiphenyl ether	mg/kg	EN 62321-6: 2015, GC-MS	N.D.	5	--
Tetrabromodiphenyl ether	mg/kg	EN 62321-6: 2015, GC-MS	N.D.	5	--
Pentabromodiphenyl ether	mg/kg	EN 62321-6: 2015, GC-MS	N.D.	5	--
Hexabromodiphenyl ether	mg/kg	EN 62321-6: 2015, GC-MS	N.D.	5	--
Heptabromodiphenyl ether	mg/kg	EN 62321-6: 2015, GC-MS	N.D.	5	--
Octabromodiphenyl ether	mg/kg	EN 62321-6: 2015, GC-MS	N.D.	5	--
Nonabromodiphenyl ether	mg/kg	EN 62321-6: 2015, GC-MS	N.D.	5	--
--Decabromodiphenyl ether	mg/kg	EN 62321-6: 2015, GC-MS	N.D.	5	--
Dibutyl Phthalate(DBP)	mg/kg	EN 62321-8:2017, GC-MS	N.D.	50	1000
Benzylbutyl Phthalate(BBP)	mg/kg	EN 62321-8:2017, GC-MS	N.D.	50	1000
Di-(2-ethylhexyl) Phthalate(DEHP)	mg/kg	EN 62321-8:2017, GC-MS	N.D.	50	1000
Diisobutyl phthalate (DIBP)	mg/kg	EN 62321-8:2017, GC-MS	N.D.	50	1000

Test Result(No.4):

Test Item(s)	Unit	Test Method(Reference)	Result	MDL	Limit
Cadmium(Cd)	mg/kg	EN 62321-5: 2013, ICP-OES	N.D.	2	100
Lead(Pb)	mg/kg	EN 62321-5: 2013, ICP-OES	N.D.	2	1000
Mercury(Hg)	mg/kg	EN 62321-4:2013+A1:2017, ICP-OES	N.D.	2	1000
Hexavalent Chromium(CrVI)	mg/kg	EN 62321-7-1:2015, EN 62321-7-2:2017, UV-Vis	N.D.	2	1000
Sum of PBBs	mg/kg	EN 62321-6: 2015, GC-MS	N.D.	--	1000
Monobromobiphenyl	mg/kg	EN 62321-6: 2015, GC-MS	N.D.	5	--
Dibromobiphenyl	mg/kg	EN 62321-6: 2015, GC-MS	N.D.	5	--
Tribromobiphenyl	mg/kg	EN 62321-6: 2015, GC-MS	N.D.	5	--
Tetrabromobiphenyl	mg/kg	EN 62321-6: 2015, GC-MS	N.D.	5	--
Pentabromobiphenyl	mg/kg	EN 62321-6: 2015, GC-MS	N.D.	5	--
Hexabromobiphenyl	mg/kg	EN 62321-6: 2015, GC-MS	N.D.	5	--
Heptabromobiphenyl	mg/kg	EN 62321-6: 2015, GC-MS	N.D.	5	--
Octabromobiphenyl	mg/kg	EN 62321-6: 2015, GC-MS	N.D.	5	--
Nonabromobiphenyl	mg/kg	EN 62321-6: 2015, GC-MS	N.D.	5	--
Decabromobiphenyl	mg/kg	EN 62321-6: 2015, GC-MS	N.D.	5	--
Sum of PBDEs	mg/kg	EN 62321-6: 2015, GC-MS	N.D.	5	1000
Monobromodiphenyl ether	mg/kg	EN 62321-6: 2015, GC-MS	N.D.	5	--
Dibromodiphenyl ether	mg/kg	EN 62321-6: 2015, GC-MS	N.D.	5	--
Tribromodiphenyl ether	mg/kg	EN 62321-6: 2015, GC-MS	N.D.	5	--
Tetrabromodiphenyl ether	mg/kg	EN 62321-6: 2015, GC-MS	N.D.	5	--
Pentabromodiphenyl ether	mg/kg	EN 62321-6: 2015, GC-MS	N.D.	5	--
Hexabromodiphenyl ether	mg/kg	EN 62321-6: 2015, GC-MS	N.D.	5	--
Heptabromodiphenyl ether	mg/kg	EN 62321-6: 2015, GC-MS	N.D.	5	--
Octabromodiphenyl ether	mg/kg	EN 62321-6: 2015, GC-MS	N.D.	5	--
Nonabromodiphenyl ether	mg/kg	EN 62321-6: 2015, GC-MS	N.D.	5	--
--Decabromodiphenyl ether	mg/kg	EN 62321-6: 2015, GC-MS	N.D.	5	--
Dibutyl Phthalate(DBP)	mg/kg	EN 62321-8:2017, GC-MS	N.D.	50	1000
Benzylbutyl Phthalate(BBP)	mg/kg	EN 62321-8:2017, GC-MS	N.D.	50	1000
Di-(2-ethylhexyl) Phthalate(DEHP)	mg/kg	EN 62321-8:2017, GC-MS	N.D.	50	1000
Diisobutyl phthalate (DIBP)	mg/kg	EN 62321-8:2017, GC-MS	N.D.	50	1000

Test Result(No.5):

Test Item(s)	Unit	Test Method(Reference)	Result	MDL	Limit
Cadmium(Cd)	mg/kg	EN 62321-5: 2013, ICP-OES	N.D.	2	100
Lead(Pb)	mg/kg	EN 62321-5: 2013, ICP-OES	N.D.	2	1000
Mercury(Hg)	mg/kg	EN 62321-4:2013+A1:2017, ICP-OES	N.D.	2	1000
Hexavalent Chromium(CrVI)	mg/kg	EN 62321-7-1:2015, EN 62321-7-2:2017, UV-Vis	N.D.	2	1000
Sum of PBBs	mg/kg	EN 62321-6: 2015, GC-MS	N.D.	--	1000
Monobromobiphenyl	mg/kg	EN 62321-6: 2015, GC-MS	N.D.	5	--
Dibromobiphenyl	mg/kg	EN 62321-6: 2015, GC-MS	N.D.	5	--
Tribromobiphenyl	mg/kg	EN 62321-6: 2015, GC-MS	N.D.	5	--
Tetrabromobiphenyl	mg/kg	EN 62321-6: 2015, GC-MS	N.D.	5	--
Pentabromobiphenyl	mg/kg	EN 62321-6: 2015, GC-MS	N.D.	5	--
Hexabromobiphenyl	mg/kg	EN 62321-6: 2015, GC-MS	N.D.	5	--
Heptabromobiphenyl	mg/kg	EN 62321-6: 2015, GC-MS	N.D.	5	--
Octabromobiphenyl	mg/kg	EN 62321-6: 2015, GC-MS	N.D.	5	--
Nonabromobiphenyl	mg/kg	EN 62321-6: 2015, GC-MS	N.D.	5	--
Decabromobiphenyl	mg/kg	EN 62321-6: 2015, GC-MS	N.D.	5	--
Sum of PBDEs	mg/kg	EN 62321-6: 2015, GC-MS	N.D.	5	1000
Monobromodiphenyl ether	mg/kg	EN 62321-6: 2015, GC-MS	N.D.	5	--
Dibromodiphenyl ether	mg/kg	EN 62321-6: 2015, GC-MS	N.D.	5	--
Tribromodiphenyl ether	mg/kg	EN 62321-6: 2015, GC-MS	N.D.	5	--
Tetrabromodiphenyl ether	mg/kg	EN 62321-6: 2015, GC-MS	N.D.	5	--
Pentabromodiphenyl ether	mg/kg	EN 62321-6: 2015, GC-MS	N.D.	5	--
Hexabromodiphenyl ether	mg/kg	EN 62321-6: 2015, GC-MS	N.D.	5	--
Heptabromodiphenyl ether	mg/kg	EN 62321-6: 2015, GC-MS	N.D.	5	--
Octabromodiphenyl ether	mg/kg	EN 62321-6: 2015, GC-MS	N.D.	5	--
Nonabromodiphenyl ether	mg/kg	EN 62321-6: 2015, GC-MS	N.D.	5	--
--Decabromodiphenyl ether	mg/kg	EN 62321-6: 2015, GC-MS	N.D.	5	--
Dibutyl Phthalate(DBP)	mg/kg	EN 62321-8:2017, GC-MS	N.D.	50	1000
Benzylbutyl Phthalate(BBP)	mg/kg	EN 62321-8:2017, GC-MS	N.D.	50	1000
Di-(2-ethylhexyl) Phthalate(DEHP)	mg/kg	EN 62321-8:2017, GC-MS	N.D.	50	1000
Diisobutyl phthalate (DIBP)	mg/kg	EN 62321-8:2017, GC-MS	N.D.	50	1000

Test Result(No.6):

Test Item(s)	Unit	Test Method(Reference)	Result	MDL	Limit
Cadmium(Cd)	mg/kg	EN 62321-5: 2013, ICP-OES	N.D.	2	100
Lead(Pb)	mg/kg	EN 62321-5: 2013, ICP-OES	N.D.	2	1000
Mercury(Hg)	mg/kg	EN 62321-4:2013+A1:2017, ICP-OES	N.D.	2	1000
Hexavalent Chromium(CrVI)	mg/kg	EN 62321-7-1:2015, EN 62321-7-2:2017, UV-Vis	N.D.	2	1000
Sum of PBBs	mg/kg	EN 62321-6: 2015, GC-MS	N.D.	--	1000
Monobromobiphenyl	mg/kg	EN 62321-6: 2015, GC-MS	N.D.	5	--
Dibromobiphenyl	mg/kg	EN 62321-6: 2015, GC-MS	N.D.	5	--
Tribromobiphenyl	mg/kg	EN 62321-6: 2015, GC-MS	N.D.	5	--
Tetrabromobiphenyl	mg/kg	EN 62321-6: 2015, GC-MS	N.D.	5	--
Pentabromobiphenyl	mg/kg	EN 62321-6: 2015, GC-MS	N.D.	5	--
Hexabromobiphenyl	mg/kg	EN 62321-6: 2015, GC-MS	N.D.	5	--
Heptabromobiphenyl	mg/kg	EN 62321-6: 2015, GC-MS	N.D.	5	--
Octabromobiphenyl	mg/kg	EN 62321-6: 2015, GC-MS	N.D.	5	--
Nonabromobiphenyl	mg/kg	EN 62321-6: 2015, GC-MS	N.D.	5	--
Decabromobiphenyl	mg/kg	EN 62321-6: 2015, GC-MS	N.D.	5	--
Sum of PBDEs	mg/kg	EN 62321-6: 2015, GC-MS	N.D.	5	1000
Monobromodiphenyl ether	mg/kg	EN 62321-6: 2015, GC-MS	N.D.	5	--
Dibromodiphenyl ether	mg/kg	EN 62321-6: 2015, GC-MS	N.D.	5	--
Tribromodiphenyl ether	mg/kg	EN 62321-6: 2015, GC-MS	N.D.	5	--
Tetrabromodiphenyl ether	mg/kg	EN 62321-6: 2015, GC-MS	N.D.	5	--
Pentabromodiphenyl ether	mg/kg	EN 62321-6: 2015, GC-MS	N.D.	5	--
Hexabromodiphenyl ether	mg/kg	EN 62321-6: 2015, GC-MS	N.D.	5	--
Heptabromodiphenyl ether	mg/kg	EN 62321-6: 2015, GC-MS	N.D.	5	--
Octabromodiphenyl ether	mg/kg	EN 62321-6: 2015, GC-MS	N.D.	5	--
Nonabromodiphenyl ether	mg/kg	EN 62321-6: 2015, GC-MS	N.D.	5	--
--Decabromodiphenyl ether	mg/kg	EN 62321-6: 2015, GC-MS	N.D.	5	--
Dibutyl Phthalate(DBP)	mg/kg	EN 62321-8:2017, GC-MS	N.D.	50	1000
Benzylbutyl Phthalate(BBP)	mg/kg	EN 62321-8:2017, GC-MS	N.D.	50	1000
Di-(2-ethylhexyl) Phthalate(DEHP)	mg/kg	EN 62321-8:2017, GC-MS	N.D.	50	1000
Diisobutyl phthalate (DIBP)	mg/kg	EN 62321-8:2017, GC-MS	N.D.	50	1000

Test Result(No.7):

Test Item(s)	Unit	Test Method(Reference)	Result	MDL	Limit
Cadmium(Cd)	mg/kg	EN 62321-5: 2013, ICP-OES	N.D.	2	100
Lead(Pb)	mg/kg	EN 62321-5: 2013, ICP-OES	N.D.	2	1000
Mercury(Hg)	mg/kg	EN 62321-4:2013+A1:2017, ICP-OES	N.D.	2	1000
Hexavalent Chromium(CrVI)	mg/kg	EN 62321-7-1:2015, EN 62321-7-2:2017, UV-Vis	N.D.	2	1000
Sum of PBBs	mg/kg	EN 62321-6: 2015, GC-MS	N.D.	--	1000
Monobromobiphenyl	mg/kg	EN 62321-6: 2015, GC-MS	N.D.	5	--
Dibromobiphenyl	mg/kg	EN 62321-6: 2015, GC-MS	N.D.	5	--
Tribromobiphenyl	mg/kg	EN 62321-6: 2015, GC-MS	N.D.	5	--
Tetrabromobiphenyl	mg/kg	EN 62321-6: 2015, GC-MS	N.D.	5	--
Pentabromobiphenyl	mg/kg	EN 62321-6: 2015, GC-MS	N.D.	5	--
Hexabromobiphenyl	mg/kg	EN 62321-6: 2015, GC-MS	N.D.	5	--
Heptabromobiphenyl	mg/kg	EN 62321-6: 2015, GC-MS	N.D.	5	--
Octabromobiphenyl	mg/kg	EN 62321-6: 2015, GC-MS	N.D.	5	--
Nonabromobiphenyl	mg/kg	EN 62321-6: 2015, GC-MS	N.D.	5	--
Decabromobiphenyl	mg/kg	EN 62321-6: 2015, GC-MS	N.D.	5	--
Sum of PBDEs	mg/kg	EN 62321-6: 2015, GC-MS	N.D.	5	1000
Monobromodiphenyl ether	mg/kg	EN 62321-6: 2015, GC-MS	N.D.	5	--
Dibromodiphenyl ether	mg/kg	EN 62321-6: 2015, GC-MS	N.D.	5	--
Tribromodiphenyl ether	mg/kg	EN 62321-6: 2015, GC-MS	N.D.	5	--
Tetrabromodiphenyl ether	mg/kg	EN 62321-6: 2015, GC-MS	N.D.	5	--
Pentabromodiphenyl ether	mg/kg	EN 62321-6: 2015, GC-MS	N.D.	5	--
Hexabromodiphenyl ether	mg/kg	EN 62321-6: 2015, GC-MS	N.D.	5	--
Heptabromodiphenyl ether	mg/kg	EN 62321-6: 2015, GC-MS	N.D.	5	--
Octabromodiphenyl ether	mg/kg	EN 62321-6: 2015, GC-MS	N.D.	5	--
Nonabromodiphenyl ether	mg/kg	EN 62321-6: 2015, GC-MS	N.D.	5	--
--Decabromodiphenyl ether	mg/kg	EN 62321-6: 2015, GC-MS	N.D.	5	--
Dibutyl Phthalate(DBP)	mg/kg	EN 62321-8:2017, GC-MS	N.D.	50	1000
Benzylbutyl Phthalate(BBP)	mg/kg	EN 62321-8:2017, GC-MS	N.D.	50	1000
Di-(2-ethylhexyl) Phthalate(DEHP)	mg/kg	EN 62321-8:2017, GC-MS	N.D.	50	1000
Diisobutyl phthalate (DIBP)	mg/kg	EN 62321-8:2017, GC-MS	N.D.	50	1000

Test Result(No.8):

Test Item(s)	Unit	Test Method(Reference)	Result	MDL	Limit
Cadmium(Cd)	mg/kg	EN 62321-5: 2013, ICP-OES	N.D.	2	100
Lead(Pb)	mg/kg	EN 62321-5: 2013, ICP-OES	N.D.	2	1000
Mercury(Hg)	mg/kg	EN 62321-4:2013+A1:2017, ICP-OES	N.D.	2	1000
Hexavalent Chromium(CrVI)	mg/kg	EN 62321-7-1:2015, EN 62321-7-2:2017, UV-Vis	N.D.	2	1000
Sum of PBBs	mg/kg	EN 62321-6: 2015, GC-MS	N.D.	--	1000
Monobromobiphenyl	mg/kg	EN 62321-6: 2015, GC-MS	N.D.	5	--
Dibromobiphenyl	mg/kg	EN 62321-6: 2015, GC-MS	N.D.	5	--
Tribromobiphenyl	mg/kg	EN 62321-6: 2015, GC-MS	N.D.	5	--
Tetrabromobiphenyl	mg/kg	EN 62321-6: 2015, GC-MS	N.D.	5	--
Pentabromobiphenyl	mg/kg	EN 62321-6: 2015, GC-MS	N.D.	5	--
Hexabromobiphenyl	mg/kg	EN 62321-6: 2015, GC-MS	N.D.	5	--
Heptabromobiphenyl	mg/kg	EN 62321-6: 2015, GC-MS	N.D.	5	--
Octabromobiphenyl	mg/kg	EN 62321-6: 2015, GC-MS	N.D.	5	--
Nonabromobiphenyl	mg/kg	EN 62321-6: 2015, GC-MS	N.D.	5	--
Decabromobiphenyl	mg/kg	EN 62321-6: 2015, GC-MS	N.D.	5	--
Sum of PBDEs	mg/kg	EN 62321-6: 2015, GC-MS	N.D.	5	1000
Monobromodiphenyl ether	mg/kg	EN 62321-6: 2015, GC-MS	N.D.	5	--
Dibromodiphenyl ether	mg/kg	EN 62321-6: 2015, GC-MS	N.D.	5	--
Tribromodiphenyl ether	mg/kg	EN 62321-6: 2015, GC-MS	N.D.	5	--
Tetrabromodiphenyl ether	mg/kg	EN 62321-6: 2015, GC-MS	N.D.	5	--
Pentabromodiphenyl ether	mg/kg	EN 62321-6: 2015, GC-MS	N.D.	5	--
Hexabromodiphenyl ether	mg/kg	EN 62321-6: 2015, GC-MS	N.D.	5	--
Heptabromodiphenyl ether	mg/kg	EN 62321-6: 2015, GC-MS	N.D.	5	--
Octabromodiphenyl ether	mg/kg	EN 62321-6: 2015, GC-MS	N.D.	5	--
Nonabromodiphenyl ether	mg/kg	EN 62321-6: 2015, GC-MS	N.D.	5	--
--Decabromodiphenyl ether	mg/kg	EN 62321-6: 2015, GC-MS	N.D.	5	--
Dibutyl Phthalate(DBP)	mg/kg	EN 62321-8:2017, GC-MS	N.D.	50	1000
Benzylbutyl Phthalate(BBP)	mg/kg	EN 62321-8:2017, GC-MS	N.D.	50	1000
Di-(2-ethylhexyl) Phthalate(DEHP)	mg/kg	EN 62321-8:2017, GC-MS	N.D.	50	1000
Diisobutyl phthalate (DIBP)	mg/kg	EN 62321-8:2017, GC-MS	N.D.	50	1000

Test Result(No.9):

Test Item(s)	Unit	Test Method(Reference)	Result	MDL	Limit
Cadmium(Cd)	mg/kg	EN 62321-5: 2013, ICP-OES	N.D.	2	100
Lead(Pb)	mg/kg	EN 62321-5: 2013, ICP-OES	N.D.	2	1000
Mercury(Hg)	mg/kg	EN 62321-4:2013+A1:2017, ICP-OES	N.D.	2	1000
Hexavalent Chromium(CrVI)	mg/kg	EN 62321-7-1:2015, EN 62321-7-2:2017, UV-Vis	N.D.	2	1000
Sum of PBBs	mg/kg	EN 62321-6: 2015, GC-MS	N.D.	--	1000
Monobromobiphenyl	mg/kg	EN 62321-6: 2015, GC-MS	N.D.	5	--
Dibromobiphenyl	mg/kg	EN 62321-6: 2015, GC-MS	N.D.	5	--
Tribromobiphenyl	mg/kg	EN 62321-6: 2015, GC-MS	N.D.	5	--
Tetrabromobiphenyl	mg/kg	EN 62321-6: 2015, GC-MS	N.D.	5	--
Pentabromobiphenyl	mg/kg	EN 62321-6: 2015, GC-MS	N.D.	5	--
Hexabromobiphenyl	mg/kg	EN 62321-6: 2015, GC-MS	N.D.	5	--
Heptabromobiphenyl	mg/kg	EN 62321-6: 2015, GC-MS	N.D.	5	--
Octabromobiphenyl	mg/kg	EN 62321-6: 2015, GC-MS	N.D.	5	--
Nonabromobiphenyl	mg/kg	EN 62321-6: 2015, GC-MS	N.D.	5	--
Decabromobiphenyl	mg/kg	EN 62321-6: 2015, GC-MS	N.D.	5	--
Sum of PBDEs	mg/kg	EN 62321-6: 2015, GC-MS	N.D.	5	1000
Monobromodiphenyl ether	mg/kg	EN 62321-6: 2015, GC-MS	N.D.	5	--
Dibromodiphenyl ether	mg/kg	EN 62321-6: 2015, GC-MS	N.D.	5	--
Tribromodiphenyl ether	mg/kg	EN 62321-6: 2015, GC-MS	N.D.	5	--
Tetrabromodiphenyl ether	mg/kg	EN 62321-6: 2015, GC-MS	N.D.	5	--
Pentabromodiphenyl ether	mg/kg	EN 62321-6: 2015, GC-MS	N.D.	5	--
Hexabromodiphenyl ether	mg/kg	EN 62321-6: 2015, GC-MS	N.D.	5	--
Heptabromodiphenyl ether	mg/kg	EN 62321-6: 2015, GC-MS	N.D.	5	--
Octabromodiphenyl ether	mg/kg	EN 62321-6: 2015, GC-MS	N.D.	5	--
Nonabromodiphenyl ether	mg/kg	EN 62321-6: 2015, GC-MS	N.D.	5	--
--Decabromodiphenyl ether	mg/kg	EN 62321-6: 2015, GC-MS	N.D.	5	--
Dibutyl Phthalate(DBP)	mg/kg	EN 62321-8:2017, GC-MS	N.D.	50	1000
Benzylbutyl Phthalate(BBP)	mg/kg	EN 62321-8:2017, GC-MS	N.D.	50	1000
Di-(2-ethylhexyl) Phthalate(DEHP)	mg/kg	EN 62321-8:2017, GC-MS	N.D.	50	1000
Diisobutyl phthalate (DIBP)	mg/kg	EN 62321-8:2017, GC-MS	N.D.	50	1000

Test Result(No.10):

Test Item(s)	Unit	Test Method(Reference)	Result	MDL	Limit
Cadmium(Cd)	mg/kg	EN 62321-5: 2013, ICP-OES	N.D.	2	100
Lead(Pb)	mg/kg	EN 62321-5: 2013, ICP-OES	N.D.	2	1000
Mercury(Hg)	mg/kg	EN 62321-4:2013+A1:2017, ICP-OES	N.D.	2	1000
Hexavalent Chromium(CrVI)	mg/kg	EN 62321-7-1:2015, EN 62321-7-2:2017, UV-Vis	N.D.	2	1000
Sum of PBBs	mg/kg	EN 62321-6: 2015, GC-MS	N.D.	--	1000
Monobromobiphenyl	mg/kg	EN 62321-6: 2015, GC-MS	N.D.	5	--
Dibromobiphenyl	mg/kg	EN 62321-6: 2015, GC-MS	N.D.	5	--
Tribromobiphenyl	mg/kg	EN 62321-6: 2015, GC-MS	N.D.	5	--
Tetrabromobiphenyl	mg/kg	EN 62321-6: 2015, GC-MS	N.D.	5	--
Pentabromobiphenyl	mg/kg	EN 62321-6: 2015, GC-MS	N.D.	5	--
Hexabromobiphenyl	mg/kg	EN 62321-6: 2015, GC-MS	N.D.	5	--
Heptabromobiphenyl	mg/kg	EN 62321-6: 2015, GC-MS	N.D.	5	--
Octabromobiphenyl	mg/kg	EN 62321-6: 2015, GC-MS	N.D.	5	--
Nonabromobiphenyl	mg/kg	EN 62321-6: 2015, GC-MS	N.D.	5	--
Decabromobiphenyl	mg/kg	EN 62321-6: 2015, GC-MS	N.D.	5	--
Sum of PBDEs	mg/kg	EN 62321-6: 2015, GC-MS	N.D.	5	1000
Monobromodiphenyl ether	mg/kg	EN 62321-6: 2015, GC-MS	N.D.	5	--
Dibromodiphenyl ether	mg/kg	EN 62321-6: 2015, GC-MS	N.D.	5	--
Tribromodiphenyl ether	mg/kg	EN 62321-6: 2015, GC-MS	N.D.	5	--
Tetrabromodiphenyl ether	mg/kg	EN 62321-6: 2015, GC-MS	N.D.	5	--
Pentabromodiphenyl ether	mg/kg	EN 62321-6: 2015, GC-MS	N.D.	5	--
Hexabromodiphenyl ether	mg/kg	EN 62321-6: 2015, GC-MS	N.D.	5	--
Heptabromodiphenyl ether	mg/kg	EN 62321-6: 2015, GC-MS	N.D.	5	--
Octabromodiphenyl ether	mg/kg	EN 62321-6: 2015, GC-MS	N.D.	5	--
Nonabromodiphenyl ether	mg/kg	EN 62321-6: 2015, GC-MS	N.D.	5	--
--Decabromodiphenyl ether	mg/kg	EN 62321-6: 2015, GC-MS	N.D.	5	--
Dibutyl Phthalate(DBP)	mg/kg	EN 62321-8:2017, GC-MS	N.D.	50	1000
Benzylbutyl Phthalate(BBP)	mg/kg	EN 62321-8:2017, GC-MS	N.D.	50	1000
Di-(2-ethylhexyl) Phthalate(DEHP)	mg/kg	EN 62321-8:2017, GC-MS	N.D.	50	1000
Diisobutyl phthalate (DIBP)	mg/kg	EN 62321-8:2017, GC-MS	N.D.	50	1000

Test Result(No.11):

Test Item(s)	Unit	Test Method(Reference)	Result	MDL	Limit
Cadmium(Cd)	mg/kg	EN 62321-5: 2013, ICP-OES	N.D.	2	100
Lead(Pb)	mg/kg	EN 62321-5: 2013, ICP-OES	N.D.	2	1000
Mercury(Hg)	mg/kg	EN 62321-4:2013+A1:2017, ICP-OES	N.D.	2	1000
Hexavalent Chromium(CrVI)	mg/kg	EN 62321-7-1:2015, EN 62321-7-2:2017, UV-Vis	N.D.	2	1000
Sum of PBBs	mg/kg	EN 62321-6: 2015, GC-MS	N.D.	--	1000
Monobromobiphenyl	mg/kg	EN 62321-6: 2015, GC-MS	N.D.	5	--
Dibromobiphenyl	mg/kg	EN 62321-6: 2015, GC-MS	N.D.	5	--
Tribromobiphenyl	mg/kg	EN 62321-6: 2015, GC-MS	N.D.	5	--
Tetrabromobiphenyl	mg/kg	EN 62321-6: 2015, GC-MS	N.D.	5	--
Pentabromobiphenyl	mg/kg	EN 62321-6: 2015, GC-MS	N.D.	5	--
Hexabromobiphenyl	mg/kg	EN 62321-6: 2015, GC-MS	N.D.	5	--
Heptabromobiphenyl	mg/kg	EN 62321-6: 2015, GC-MS	N.D.	5	--
Octabromobiphenyl	mg/kg	EN 62321-6: 2015, GC-MS	N.D.	5	--
Nonabromobiphenyl	mg/kg	EN 62321-6: 2015, GC-MS	N.D.	5	--
Decabromobiphenyl	mg/kg	EN 62321-6: 2015, GC-MS	N.D.	5	--
Sum of PBDEs	mg/kg	EN 62321-6: 2015, GC-MS	N.D.	5	1000
Monobromodiphenyl ether	mg/kg	EN 62321-6: 2015, GC-MS	N.D.	5	--
Dibromodiphenyl ether	mg/kg	EN 62321-6: 2015, GC-MS	N.D.	5	--
Tribromodiphenyl ether	mg/kg	EN 62321-6: 2015, GC-MS	N.D.	5	--
Tetrabromodiphenyl ether	mg/kg	EN 62321-6: 2015, GC-MS	N.D.	5	--
Pentabromodiphenyl ether	mg/kg	EN 62321-6: 2015, GC-MS	N.D.	5	--
Hexabromodiphenyl ether	mg/kg	EN 62321-6: 2015, GC-MS	N.D.	5	--
Heptabromodiphenyl ether	mg/kg	EN 62321-6: 2015, GC-MS	N.D.	5	--
Octabromodiphenyl ether	mg/kg	EN 62321-6: 2015, GC-MS	N.D.	5	--
Nonabromodiphenyl ether	mg/kg	EN 62321-6: 2015, GC-MS	N.D.	5	--
--Decabromodiphenyl ether	mg/kg	EN 62321-6: 2015, GC-MS	N.D.	5	--
Dibutyl Phthalate(DBP)	mg/kg	EN 62321-8:2017, GC-MS	N.D.	50	1000
Benzylbutyl Phthalate(BBP)	mg/kg	EN 62321-8:2017, GC-MS	N.D.	50	1000
Di-(2-ethylhexyl) Phthalate(DEHP)	mg/kg	EN 62321-8:2017, GC-MS	N.D.	50	1000
Diisobutyl phthalate (DIBP)	mg/kg	EN 62321-8:2017, GC-MS	N.D.	50	1000

航天检测技术（深圳）有限公司

广东省深圳市宝安区松岗街道沙浦洋涌工业区8路5号A1栋三楼

Aerospace Testing Technology (Shenzhen) Co., Ltd.

3/F, Block A1, No.5, 8th Road, Shapu Yangyong Industrial Park,

Songgang Street, Bao'an District, Shenzhen, Guangdong, China

Tel. (电话) : 0755-27781492

Fax. (传真) : 0755-27781492

Web. (网址) : www.ast-test.com

E-mail(邮箱) : ast@hangtianjc.com

Test Result(No.12):

Test Item(s)	Unit	Test Method(Reference)	Result	MDL	Limit
Cadmium(Cd)	mg/kg	EN 62321-5: 2013, ICP-OES	N.D.	2	100
Lead(Pb)	mg/kg	EN 62321-5: 2013, ICP-OES	N.D.	2	1000
Mercury(Hg)	mg/kg	EN 62321-4:2013+A1:2017, ICP-OES	N.D.	2	1000
Hexavalent Chromium(CrVI)	mg/kg	EN 62321-7-1:2015, EN 62321-7-2:2017, UV-Vis	N.D.	2	1000
Sum of PBBs	mg/kg	EN 62321-6: 2015, GC-MS	N.D.	--	1000
Monobromobiphenyl	mg/kg	EN 62321-6: 2015, GC-MS	N.D.	5	--
Dibromobiphenyl	mg/kg	EN 62321-6: 2015, GC-MS	N.D.	5	--
Tribromobiphenyl	mg/kg	EN 62321-6: 2015, GC-MS	N.D.	5	--
Tetrabromobiphenyl	mg/kg	EN 62321-6: 2015, GC-MS	N.D.	5	--
Pentabromobiphenyl	mg/kg	EN 62321-6: 2015, GC-MS	N.D.	5	--
Hexabromobiphenyl	mg/kg	EN 62321-6: 2015, GC-MS	N.D.	5	--
Heptabromobiphenyl	mg/kg	EN 62321-6: 2015, GC-MS	N.D.	5	--
Octabromobiphenyl	mg/kg	EN 62321-6: 2015, GC-MS	N.D.	5	--
Nonabromobiphenyl	mg/kg	EN 62321-6: 2015, GC-MS	N.D.	5	--
Decabromobiphenyl	mg/kg	EN 62321-6: 2015, GC-MS	N.D.	5	--
Sum of PBDEs	mg/kg	EN 62321-6: 2015, GC-MS	N.D.	5	1000
Monobromodiphenyl ether	mg/kg	EN 62321-6: 2015, GC-MS	N.D.	5	--
Dibromodiphenyl ether	mg/kg	EN 62321-6: 2015, GC-MS	N.D.	5	--
Tribromodiphenyl ether	mg/kg	EN 62321-6: 2015, GC-MS	N.D.	5	--
Tetrabromodiphenyl ether	mg/kg	EN 62321-6: 2015, GC-MS	N.D.	5	--
Pentabromodiphenyl ether	mg/kg	EN 62321-6: 2015, GC-MS	N.D.	5	--
Hexabromodiphenyl ether	mg/kg	EN 62321-6: 2015, GC-MS	N.D.	5	--
Heptabromodiphenyl ether	mg/kg	EN 62321-6: 2015, GC-MS	N.D.	5	--
Octabromodiphenyl ether	mg/kg	EN 62321-6: 2015, GC-MS	N.D.	5	--
Nonabromodiphenyl ether	mg/kg	EN 62321-6: 2015, GC-MS	N.D.	5	--
--Decabromodiphenyl ether	mg/kg	EN 62321-6: 2015, GC-MS	N.D.	5	--
Dibutyl Phthalate(DBP)	mg/kg	EN 62321-8:2017, GC-MS	N.D.	50	1000
Benzylbutyl Phthalate(BBP)	mg/kg	EN 62321-8:2017, GC-MS	N.D.	50	1000
Di-(2-ethylhexyl) Phthalate(DEHP)	mg/kg	EN 62321-8:2017, GC-MS	N.D.	50	1000
Diisobutyl phthalate (DIBP)	mg/kg	EN 62321-8:2017, GC-MS	N.D.	50	1000

Test Result(No.13):

Test Item(s)	Unit	Test Method(Reference)	Result	MDL	Limit
Cadmium(Cd)	mg/kg	EN 62321-5: 2013, ICP-OES	N.D.	2	100
Lead(Pb)	mg/kg	EN 62321-5: 2013, ICP-OES	N.D.	2	1000
Mercury(Hg)	mg/kg	EN 62321-4:2013+A1:2017, ICP-OES	N.D.	2	1000
Hexavalent Chromium(CrVI)	mg/kg	EN 62321-7-1:2015, EN 62321-7-2:2017, UV-Vis	N.D.	2	1000
Sum of PBBs	mg/kg	EN 62321-6: 2015, GC-MS	N.D.	--	1000
Monobromobiphenyl	mg/kg	EN 62321-6: 2015, GC-MS	N.D.	5	--
Dibromobiphenyl	mg/kg	EN 62321-6: 2015, GC-MS	N.D.	5	--
Tribromobiphenyl	mg/kg	EN 62321-6: 2015, GC-MS	N.D.	5	--
Tetrabromobiphenyl	mg/kg	EN 62321-6: 2015, GC-MS	N.D.	5	--
Pentabromobiphenyl	mg/kg	EN 62321-6: 2015, GC-MS	N.D.	5	--
Hexabromobiphenyl	mg/kg	EN 62321-6: 2015, GC-MS	N.D.	5	--
Heptabromobiphenyl	mg/kg	EN 62321-6: 2015, GC-MS	N.D.	5	--
Octabromobiphenyl	mg/kg	EN 62321-6: 2015, GC-MS	N.D.	5	--
Nonabromobiphenyl	mg/kg	EN 62321-6: 2015, GC-MS	N.D.	5	--
Decabromobiphenyl	mg/kg	EN 62321-6: 2015, GC-MS	N.D.	5	--
Sum of PBDEs	mg/kg	EN 62321-6: 2015, GC-MS	N.D.	5	1000
Monobromodiphenyl ether	mg/kg	EN 62321-6: 2015, GC-MS	N.D.	5	--
Dibromodiphenyl ether	mg/kg	EN 62321-6: 2015, GC-MS	N.D.	5	--
Tribromodiphenyl ether	mg/kg	EN 62321-6: 2015, GC-MS	N.D.	5	--
Tetrabromodiphenyl ether	mg/kg	EN 62321-6: 2015, GC-MS	N.D.	5	--
Pentabromodiphenyl ether	mg/kg	EN 62321-6: 2015, GC-MS	N.D.	5	--
Hexabromodiphenyl ether	mg/kg	EN 62321-6: 2015, GC-MS	N.D.	5	--
Heptabromodiphenyl ether	mg/kg	EN 62321-6: 2015, GC-MS	N.D.	5	--
Octabromodiphenyl ether	mg/kg	EN 62321-6: 2015, GC-MS	N.D.	5	--
Nonabromodiphenyl ether	mg/kg	EN 62321-6: 2015, GC-MS	N.D.	5	--
--Decabromodiphenyl ether	mg/kg	EN 62321-6: 2015, GC-MS	N.D.	5	--
Dibutyl Phthalate(DBP)	mg/kg	EN 62321-8:2017, GC-MS	N.D.	50	1000
Benzylbutyl Phthalate(BBP)	mg/kg	EN 62321-8:2017, GC-MS	N.D.	50	1000
Di-(2-ethylhexyl) Phthalate(DEHP)	mg/kg	EN 62321-8:2017, GC-MS	N.D.	50	1000
Diisobutyl phthalate (DIBP)	mg/kg	EN 62321-8:2017, GC-MS	N.D.	50	1000

Test Result(No.14):

Test Item(s)	Unit	Test Method(Reference)	Result	MDL	Limit
Cadmium(Cd)	mg/kg	EN 62321-5: 2013, ICP-OES	N.D.	2	100
Lead(Pb)	mg/kg	EN 62321-5: 2013, ICP-OES	N.D.	2	1000
Mercury(Hg)	mg/kg	EN 62321-4:2013+A1:2017, ICP-OES	N.D.	2	1000
Hexavalent Chromium(CrVI)	mg/kg	EN 62321-7-1:2015, EN 62321-7-2:2017, UV-Vis	N.D.	2	1000
Sum of PBBs	mg/kg	EN 62321-6: 2015, GC-MS	N.D.	--	1000
Monobromobiphenyl	mg/kg	EN 62321-6: 2015, GC-MS	N.D.	5	--
Dibromobiphenyl	mg/kg	EN 62321-6: 2015, GC-MS	N.D.	5	--
Tribromobiphenyl	mg/kg	EN 62321-6: 2015, GC-MS	N.D.	5	--
Tetrabromobiphenyl	mg/kg	EN 62321-6: 2015, GC-MS	N.D.	5	--
Pentabromobiphenyl	mg/kg	EN 62321-6: 2015, GC-MS	N.D.	5	--
Hexabromobiphenyl	mg/kg	EN 62321-6: 2015, GC-MS	N.D.	5	--
Heptabromobiphenyl	mg/kg	EN 62321-6: 2015, GC-MS	N.D.	5	--
Octabromobiphenyl	mg/kg	EN 62321-6: 2015, GC-MS	N.D.	5	--
Nonabromobiphenyl	mg/kg	EN 62321-6: 2015, GC-MS	N.D.	5	--
Decabromobiphenyl	mg/kg	EN 62321-6: 2015, GC-MS	N.D.	5	--
Sum of PBDEs	mg/kg	EN 62321-6: 2015, GC-MS	N.D.	5	1000
Monobromodiphenyl ether	mg/kg	EN 62321-6: 2015, GC-MS	N.D.	5	--
Dibromodiphenyl ether	mg/kg	EN 62321-6: 2015, GC-MS	N.D.	5	--
Tribromodiphenyl ether	mg/kg	EN 62321-6: 2015, GC-MS	N.D.	5	--
Tetrabromodiphenyl ether	mg/kg	EN 62321-6: 2015, GC-MS	N.D.	5	--
Pentabromodiphenyl ether	mg/kg	EN 62321-6: 2015, GC-MS	N.D.	5	--
Hexabromodiphenyl ether	mg/kg	EN 62321-6: 2015, GC-MS	N.D.	5	--
Heptabromodiphenyl ether	mg/kg	EN 62321-6: 2015, GC-MS	N.D.	5	--
Octabromodiphenyl ether	mg/kg	EN 62321-6: 2015, GC-MS	N.D.	5	--
Nonabromodiphenyl ether	mg/kg	EN 62321-6: 2015, GC-MS	N.D.	5	--
--Decabromodiphenyl ether	mg/kg	EN 62321-6: 2015, GC-MS	N.D.	5	--
Dibutyl Phthalate(DBP)	mg/kg	EN 62321-8:2017, GC-MS	N.D.	50	1000
Benzylbutyl Phthalate(BBP)	mg/kg	EN 62321-8:2017, GC-MS	N.D.	50	1000
Di-(2-ethylhexyl) Phthalate(DEHP)	mg/kg	EN 62321-8:2017, GC-MS	N.D.	50	1000
Diisobutyl phthalate (DIBP)	mg/kg	EN 62321-8:2017, GC-MS	N.D.	50	1000

Test Result(No.15):

Test Item(s)	Unit	Test Method(Reference)	Result	MDL	Limit
Cadmium(Cd)	mg/kg	EN 62321-5: 2013, ICP-OES	N.D.	2	100
Lead(Pb)	mg/kg	EN 62321-5: 2013, ICP-OES	N.D.	2	1000
Mercury(Hg)	mg/kg	EN 62321-4:2013+A1:2017, ICP-OES	N.D.	2	1000
Hexavalent Chromium(CrVI)	mg/kg	EN 62321-7-1:2015, EN 62321-7-2:2017, UV-Vis	N.D.	2	1000
Sum of PBBs	mg/kg	EN 62321-6: 2015, GC-MS	N.D.	--	1000
Monobromobiphenyl	mg/kg	EN 62321-6: 2015, GC-MS	N.D.	5	--
Dibromobiphenyl	mg/kg	EN 62321-6: 2015, GC-MS	N.D.	5	--
Tribromobiphenyl	mg/kg	EN 62321-6: 2015, GC-MS	N.D.	5	--
Tetrabromobiphenyl	mg/kg	EN 62321-6: 2015, GC-MS	N.D.	5	--
Pentabromobiphenyl	mg/kg	EN 62321-6: 2015, GC-MS	N.D.	5	--
Hexabromobiphenyl	mg/kg	EN 62321-6: 2015, GC-MS	N.D.	5	--
Heptabromobiphenyl	mg/kg	EN 62321-6: 2015, GC-MS	N.D.	5	--
Octabromobiphenyl	mg/kg	EN 62321-6: 2015, GC-MS	N.D.	5	--
Nonabromobiphenyl	mg/kg	EN 62321-6: 2015, GC-MS	N.D.	5	--
Decabromobiphenyl	mg/kg	EN 62321-6: 2015, GC-MS	N.D.	5	--
Sum of PBDEs	mg/kg	EN 62321-6: 2015, GC-MS	N.D.	5	1000
Monobromodiphenyl ether	mg/kg	EN 62321-6: 2015, GC-MS	N.D.	5	--
Dibromodiphenyl ether	mg/kg	EN 62321-6: 2015, GC-MS	N.D.	5	--
Tribromodiphenyl ether	mg/kg	EN 62321-6: 2015, GC-MS	N.D.	5	--
Tetrabromodiphenyl ether	mg/kg	EN 62321-6: 2015, GC-MS	N.D.	5	--
Pentabromodiphenyl ether	mg/kg	EN 62321-6: 2015, GC-MS	N.D.	5	--
Hexabromodiphenyl ether	mg/kg	EN 62321-6: 2015, GC-MS	N.D.	5	--
Heptabromodiphenyl ether	mg/kg	EN 62321-6: 2015, GC-MS	N.D.	5	--
Octabromodiphenyl ether	mg/kg	EN 62321-6: 2015, GC-MS	N.D.	5	--
Nonabromodiphenyl ether	mg/kg	EN 62321-6: 2015, GC-MS	N.D.	5	--
--Decabromodiphenyl ether	mg/kg	EN 62321-6: 2015, GC-MS	N.D.	5	--
Dibutyl Phthalate(DBP)	mg/kg	EN 62321-8:2017, GC-MS	N.D.	50	1000
Benzylbutyl Phthalate(BBP)	mg/kg	EN 62321-8:2017, GC-MS	N.D.	50	1000
Di-(2-ethylhexyl) Phthalate(DEHP)	mg/kg	EN 62321-8:2017, GC-MS	N.D.	50	1000
Diisobutyl phthalate (DIBP)	mg/kg	EN 62321-8:2017, GC-MS	N.D.	50	1000

航天检测技术（深圳）有限公司

广东省深圳市宝安区松岗街道沙浦洋涌工业区8路5号A1栋三楼

Aerospace Testing Technology (Shenzhen) Co., Ltd.

3/F, Block A1, No.5, 8th Road, Shapu Yangyong Industrial Park,

Songgang Street, Bao'an District, Shenzhen, Guangdong, China

Tel. (电话) : 0755-27781492

Fax. (传真) : 0755-27781492

Web. (网址) : www.ast-test.com

E-mail(邮箱) : ast@hangtianjc.com

Test Result(No.16):

Test Item(s)	Unit	Test Method(Reference)	Result	MDL	Limit
Cadmium(Cd)	mg/kg	EN 62321-5: 2013, ICP-OES	N.D.	2	100
Lead(Pb)	mg/kg	EN 62321-5: 2013, ICP-OES	N.D.	2	1000
Mercury(Hg)	mg/kg	EN 62321-4:2013+A1:2017, ICP-OES	N.D.	2	1000
Hexavalent Chromium(CrVI)	mg/kg	EN 62321-7-1:2015, EN 62321-7-2:2017, UV-Vis	N.D.	2	1000
Sum of PBBs	mg/kg	EN 62321-6: 2015, GC-MS	N.D.	--	1000
Monobromobiphenyl	mg/kg	EN 62321-6: 2015, GC-MS	N.D.	5	--
Dibromobiphenyl	mg/kg	EN 62321-6: 2015, GC-MS	N.D.	5	--
Tribromobiphenyl	mg/kg	EN 62321-6: 2015, GC-MS	N.D.	5	--
Tetrabromobiphenyl	mg/kg	EN 62321-6: 2015, GC-MS	N.D.	5	--
Pentabromobiphenyl	mg/kg	EN 62321-6: 2015, GC-MS	N.D.	5	--
Hexabromobiphenyl	mg/kg	EN 62321-6: 2015, GC-MS	N.D.	5	--
Heptabromobiphenyl	mg/kg	EN 62321-6: 2015, GC-MS	N.D.	5	--
Octabromobiphenyl	mg/kg	EN 62321-6: 2015, GC-MS	N.D.	5	--
Nonabromobiphenyl	mg/kg	EN 62321-6: 2015, GC-MS	N.D.	5	--
Decabromobiphenyl	mg/kg	EN 62321-6: 2015, GC-MS	N.D.	5	--
Sum of PBDEs	mg/kg	EN 62321-6: 2015, GC-MS	N.D.	5	1000
Monobromodiphenyl ether	mg/kg	EN 62321-6: 2015, GC-MS	N.D.	5	--
Dibromodiphenyl ether	mg/kg	EN 62321-6: 2015, GC-MS	N.D.	5	--
Tribromodiphenyl ether	mg/kg	EN 62321-6: 2015, GC-MS	N.D.	5	--
Tetrabromodiphenyl ether	mg/kg	EN 62321-6: 2015, GC-MS	N.D.	5	--
Pentabromodiphenyl ether	mg/kg	EN 62321-6: 2015, GC-MS	N.D.	5	--
Hexabromodiphenyl ether	mg/kg	EN 62321-6: 2015, GC-MS	N.D.	5	--
Heptabromodiphenyl ether	mg/kg	EN 62321-6: 2015, GC-MS	N.D.	5	--
Octabromodiphenyl ether	mg/kg	EN 62321-6: 2015, GC-MS	N.D.	5	--
Nonabromodiphenyl ether	mg/kg	EN 62321-6: 2015, GC-MS	N.D.	5	--
--Decabromodiphenyl ether	mg/kg	EN 62321-6: 2015, GC-MS	N.D.	5	--
Dibutyl Phthalate(DBP)	mg/kg	EN 62321-8:2017, GC-MS	N.D.	50	1000
Benzylbutyl Phthalate(BBP)	mg/kg	EN 62321-8:2017, GC-MS	N.D.	50	1000
Di-(2-ethylhexyl) Phthalate(DEHP)	mg/kg	EN 62321-8:2017, GC-MS	N.D.	50	1000
Diisobutyl phthalate (DIBP)	mg/kg	EN 62321-8:2017, GC-MS	N.D.	50	1000

Test Result(No.17):

Test Item(s)	Unit	Test Method(Reference)	Result	MDL	Limit
Cadmium(Cd)	mg/kg	EN 62321-5: 2013, ICP-OES	N.D.	2	100
Lead(Pb)	mg/kg	EN 62321-5: 2013, ICP-OES	N.D.	2	1000
Mercury(Hg)	mg/kg	EN 62321-4:2013+A1:2017, ICP-OES	N.D.	2	1000
Hexavalent Chromium(CrVI)	mg/kg	EN 62321-7-1:2015, EN 62321-7-2:2017, UV-Vis	N.D.	2	1000
Sum of PBBs	mg/kg	EN 62321-6: 2015, GC-MS	N.D.	--	1000
Monobromobiphenyl	mg/kg	EN 62321-6: 2015, GC-MS	N.D.	5	--
Dibromobiphenyl	mg/kg	EN 62321-6: 2015, GC-MS	N.D.	5	--
Tribromobiphenyl	mg/kg	EN 62321-6: 2015, GC-MS	N.D.	5	--
Tetrabromobiphenyl	mg/kg	EN 62321-6: 2015, GC-MS	N.D.	5	--
Pentabromobiphenyl	mg/kg	EN 62321-6: 2015, GC-MS	N.D.	5	--
Hexabromobiphenyl	mg/kg	EN 62321-6: 2015, GC-MS	N.D.	5	--
Heptabromobiphenyl	mg/kg	EN 62321-6: 2015, GC-MS	N.D.	5	--
Octabromobiphenyl	mg/kg	EN 62321-6: 2015, GC-MS	N.D.	5	--
Nonabromobiphenyl	mg/kg	EN 62321-6: 2015, GC-MS	N.D.	5	--
Decabromobiphenyl	mg/kg	EN 62321-6: 2015, GC-MS	N.D.	5	--
Sum of PBDEs	mg/kg	EN 62321-6: 2015, GC-MS	N.D.	5	1000
Monobromodiphenyl ether	mg/kg	EN 62321-6: 2015, GC-MS	N.D.	5	--
Dibromodiphenyl ether	mg/kg	EN 62321-6: 2015, GC-MS	N.D.	5	--
Tribromodiphenyl ether	mg/kg	EN 62321-6: 2015, GC-MS	N.D.	5	--
Tetrabromodiphenyl ether	mg/kg	EN 62321-6: 2015, GC-MS	N.D.	5	--
Pentabromodiphenyl ether	mg/kg	EN 62321-6: 2015, GC-MS	N.D.	5	--
Hexabromodiphenyl ether	mg/kg	EN 62321-6: 2015, GC-MS	N.D.	5	--
Heptabromodiphenyl ether	mg/kg	EN 62321-6: 2015, GC-MS	N.D.	5	--
Octabromodiphenyl ether	mg/kg	EN 62321-6: 2015, GC-MS	N.D.	5	--
Nonabromodiphenyl ether	mg/kg	EN 62321-6: 2015, GC-MS	N.D.	5	--
--Decabromodiphenyl ether	mg/kg	EN 62321-6: 2015, GC-MS	N.D.	5	--
Dibutyl Phthalate(DBP)	mg/kg	EN 62321-8:2017, GC-MS	N.D.	50	1000
Benzylbutyl Phthalate(BBP)	mg/kg	EN 62321-8:2017, GC-MS	N.D.	50	1000
Di-(2-ethylhexyl) Phthalate(DEHP)	mg/kg	EN 62321-8:2017, GC-MS	N.D.	50	1000
Diisobutyl phthalate (DIBP)	mg/kg	EN 62321-8:2017, GC-MS	N.D.	50	1000

Test Result(No.18):

Test Item(s)	Unit	Test Method(Reference)	Result	MDL	Limit
Cadmium(Cd)	mg/kg	EN 62321-5: 2013, ICP-OES	N.D.	2	100
Lead(Pb)	mg/kg	EN 62321-5: 2013, ICP-OES	N.D.	2	1000
Mercury(Hg)	mg/kg	EN 62321-4:2013+A1:2017, ICP-OES	N.D.	2	1000
Hexavalent Chromium(CrVI)	mg/kg	EN 62321-7-1:2015, EN 62321-7-2:2017, UV-Vis	N.D.	2	1000
Sum of PBBs	mg/kg	EN 62321-6: 2015, GC-MS	N.D.	--	1000
Monobromobiphenyl	mg/kg	EN 62321-6: 2015, GC-MS	N.D.	5	--
Dibromobiphenyl	mg/kg	EN 62321-6: 2015, GC-MS	N.D.	5	--
Tribromobiphenyl	mg/kg	EN 62321-6: 2015, GC-MS	N.D.	5	--
Tetrabromobiphenyl	mg/kg	EN 62321-6: 2015, GC-MS	N.D.	5	--
Pentabromobiphenyl	mg/kg	EN 62321-6: 2015, GC-MS	N.D.	5	--
Hexabromobiphenyl	mg/kg	EN 62321-6: 2015, GC-MS	N.D.	5	--
Heptabromobiphenyl	mg/kg	EN 62321-6: 2015, GC-MS	N.D.	5	--
Octabromobiphenyl	mg/kg	EN 62321-6: 2015, GC-MS	N.D.	5	--
Nonabromobiphenyl	mg/kg	EN 62321-6: 2015, GC-MS	N.D.	5	--
Decabromobiphenyl	mg/kg	EN 62321-6: 2015, GC-MS	N.D.	5	--
Sum of PBDEs	mg/kg	EN 62321-6: 2015, GC-MS	N.D.	5	1000
Monobromodiphenyl ether	mg/kg	EN 62321-6: 2015, GC-MS	N.D.	5	--
Dibromodiphenyl ether	mg/kg	EN 62321-6: 2015, GC-MS	N.D.	5	--
Tribromodiphenyl ether	mg/kg	EN 62321-6: 2015, GC-MS	N.D.	5	--
Tetrabromodiphenyl ether	mg/kg	EN 62321-6: 2015, GC-MS	N.D.	5	--
Pentabromodiphenyl ether	mg/kg	EN 62321-6: 2015, GC-MS	N.D.	5	--
Hexabromodiphenyl ether	mg/kg	EN 62321-6: 2015, GC-MS	N.D.	5	--
Heptabromodiphenyl ether	mg/kg	EN 62321-6: 2015, GC-MS	N.D.	5	--
Octabromodiphenyl ether	mg/kg	EN 62321-6: 2015, GC-MS	N.D.	5	--
Nonabromodiphenyl ether	mg/kg	EN 62321-6: 2015, GC-MS	N.D.	5	--
--Decabromodiphenyl ether	mg/kg	EN 62321-6: 2015, GC-MS	N.D.	5	--
Dibutyl Phthalate(DBP)	mg/kg	EN 62321-8:2017, GC-MS	N.D.	50	1000
Benzylbutyl Phthalate(BBP)	mg/kg	EN 62321-8:2017, GC-MS	N.D.	50	1000
Di-(2-ethylhexyl) Phthalate(DEHP)	mg/kg	EN 62321-8:2017, GC-MS	N.D.	50	1000
Diisobutyl phthalate (DIBP)	mg/kg	EN 62321-8:2017, GC-MS	N.D.	50	1000

Test Result(No.19):

Test Item(s)	Unit	Test Method(Reference)	Result	MDL	Limit
Cadmium(Cd)	mg/kg	EN 62321-5: 2013, ICP-OES	N.D.	2	100
Lead(Pb)	mg/kg	EN 62321-5: 2013, ICP-OES	N.D.	2	1000
Mercury(Hg)	mg/kg	EN 62321-4:2013+A1:2017, ICP-OES	N.D.	2	1000
Hexavalent Chromium(CrVI)	mg/kg	EN 62321-7-1:2015, EN 62321-7-2:2017, UV-Vis	N.D.	2	1000
Sum of PBBs	mg/kg	EN 62321-6: 2015, GC-MS	N.D.	--	1000
Monobromobiphenyl	mg/kg	EN 62321-6: 2015, GC-MS	N.D.	5	--
Dibromobiphenyl	mg/kg	EN 62321-6: 2015, GC-MS	N.D.	5	--
Tribromobiphenyl	mg/kg	EN 62321-6: 2015, GC-MS	N.D.	5	--
Tetrabromobiphenyl	mg/kg	EN 62321-6: 2015, GC-MS	N.D.	5	--
Pentabromobiphenyl	mg/kg	EN 62321-6: 2015, GC-MS	N.D.	5	--
Hexabromobiphenyl	mg/kg	EN 62321-6: 2015, GC-MS	N.D.	5	--
Heptabromobiphenyl	mg/kg	EN 62321-6: 2015, GC-MS	N.D.	5	--
Octabromobiphenyl	mg/kg	EN 62321-6: 2015, GC-MS	N.D.	5	--
Nonabromobiphenyl	mg/kg	EN 62321-6: 2015, GC-MS	N.D.	5	--
Decabromobiphenyl	mg/kg	EN 62321-6: 2015, GC-MS	N.D.	5	--
Sum of PBDEs	mg/kg	EN 62321-6: 2015, GC-MS	N.D.	5	1000
Monobromodiphenyl ether	mg/kg	EN 62321-6: 2015, GC-MS	N.D.	5	--
Dibromodiphenyl ether	mg/kg	EN 62321-6: 2015, GC-MS	N.D.	5	--
Tribromodiphenyl ether	mg/kg	EN 62321-6: 2015, GC-MS	N.D.	5	--
Tetrabromodiphenyl ether	mg/kg	EN 62321-6: 2015, GC-MS	N.D.	5	--
Pentabromodiphenyl ether	mg/kg	EN 62321-6: 2015, GC-MS	N.D.	5	--
Hexabromodiphenyl ether	mg/kg	EN 62321-6: 2015, GC-MS	N.D.	5	--
Heptabromodiphenyl ether	mg/kg	EN 62321-6: 2015, GC-MS	N.D.	5	--
Octabromodiphenyl ether	mg/kg	EN 62321-6: 2015, GC-MS	N.D.	5	--
Nonabromodiphenyl ether	mg/kg	EN 62321-6: 2015, GC-MS	N.D.	5	--
--Decabromodiphenyl ether	mg/kg	EN 62321-6: 2015, GC-MS	N.D.	5	--
Dibutyl Phthalate(DBP)	mg/kg	EN 62321-8:2017, GC-MS	N.D.	50	1000
Benzylbutyl Phthalate(BBP)	mg/kg	EN 62321-8:2017, GC-MS	N.D.	50	1000
Di-(2-ethylhexyl) Phthalate(DEHP)	mg/kg	EN 62321-8:2017, GC-MS	N.D.	50	1000
Diisobutyl phthalate (DIBP)	mg/kg	EN 62321-8:2017, GC-MS	N.D.	50	1000

Test Result(No.20):

Test Item(s)	Unit	Test Method(Reference)	Result	MDL	Limit
Cadmium(Cd)	mg/kg	EN 62321-5: 2013, ICP-OES	N.D.	2	100
Lead(Pb)	mg/kg	EN 62321-5: 2013, ICP-OES	N.D.	2	1000
Mercury(Hg)	mg/kg	EN 62321-4:2013+A1:2017, ICP-OES	N.D.	2	1000
Hexavalent Chromium(CrVI)	mg/kg	EN 62321-7-1:2015, EN 62321-7-2:2017, UV-Vis	N.D.	2	1000
Sum of PBBs	mg/kg	EN 62321-6: 2015, GC-MS	N.D.	--	1000
Monobromobiphenyl	mg/kg	EN 62321-6: 2015, GC-MS	N.D.	5	--
Dibromobiphenyl	mg/kg	EN 62321-6: 2015, GC-MS	N.D.	5	--
Tribromobiphenyl	mg/kg	EN 62321-6: 2015, GC-MS	N.D.	5	--
Tetrabromobiphenyl	mg/kg	EN 62321-6: 2015, GC-MS	N.D.	5	--
Pentabromobiphenyl	mg/kg	EN 62321-6: 2015, GC-MS	N.D.	5	--
Hexabromobiphenyl	mg/kg	EN 62321-6: 2015, GC-MS	N.D.	5	--
Heptabromobiphenyl	mg/kg	EN 62321-6: 2015, GC-MS	N.D.	5	--
Octabromobiphenyl	mg/kg	EN 62321-6: 2015, GC-MS	N.D.	5	--
Nonabromobiphenyl	mg/kg	EN 62321-6: 2015, GC-MS	N.D.	5	--
Decabromobiphenyl	mg/kg	EN 62321-6: 2015, GC-MS	N.D.	5	--
Sum of PBDEs	mg/kg	EN 62321-6: 2015, GC-MS	N.D.	5	1000
Monobromodiphenyl ether	mg/kg	EN 62321-6: 2015, GC-MS	N.D.	5	--
Dibromodiphenyl ether	mg/kg	EN 62321-6: 2015, GC-MS	N.D.	5	--
Tribromodiphenyl ether	mg/kg	EN 62321-6: 2015, GC-MS	N.D.	5	--
Tetrabromodiphenyl ether	mg/kg	EN 62321-6: 2015, GC-MS	N.D.	5	--
Pentabromodiphenyl ether	mg/kg	EN 62321-6: 2015, GC-MS	N.D.	5	--
Hexabromodiphenyl ether	mg/kg	EN 62321-6: 2015, GC-MS	N.D.	5	--
Heptabromodiphenyl ether	mg/kg	EN 62321-6: 2015, GC-MS	N.D.	5	--
Octabromodiphenyl ether	mg/kg	EN 62321-6: 2015, GC-MS	N.D.	5	--
Nonabromodiphenyl ether	mg/kg	EN 62321-6: 2015, GC-MS	N.D.	5	--
--Decabromodiphenyl ether	mg/kg	EN 62321-6: 2015, GC-MS	N.D.	5	--
Dibutyl Phthalate(DBP)	mg/kg	EN 62321-8:2017, GC-MS	N.D.	50	1000
Benzylbutyl Phthalate(BBP)	mg/kg	EN 62321-8:2017, GC-MS	N.D.	50	1000
Di-(2-ethylhexyl) Phthalate(DEHP)	mg/kg	EN 62321-8:2017, GC-MS	N.D.	50	1000
Diisobutyl phthalate (DIBP)	mg/kg	EN 62321-8:2017, GC-MS	N.D.	50	1000

航天检测技术（深圳）有限公司

广东省深圳市宝安区松岗街道沙浦洋涌工业区8路5号A1栋三楼

Aerospace Testing Technology (Shenzhen) Co., Ltd.

3/F, Block A1, No.5, 8th Road, Shapu Yangyong Industrial Park,

Songgang Street, Bao'an District, Shenzhen, Guangdong, China

Tel. (电话) : 0755-27781492

Fax. (传真) : 0755-27781492

Web. (网址) : www.ast-test.com

E-mail(邮箱) : ast@hangtianjc.com

Test Result(No.21):

Test Item(s)	Unit	Test Method(Reference)	Result	MDL	Limit
Cadmium(Cd)	mg/kg	EN 62321-5: 2013, ICP-OES	N.D.	2	100
Lead(Pb)	mg/kg	EN 62321-5: 2013, ICP-OES	N.D.	2	1000
Mercury(Hg)	mg/kg	EN 62321-4:2013+A1:2017, ICP-OES	N.D.	2	1000
Hexavalent Chromium(CrVI)	mg/kg	EN 62321-7-1:2015, EN 62321-7-2:2017, UV-Vis	N.D.	2	1000
Sum of PBBs	mg/kg	EN 62321-6: 2015, GC-MS	N.D.	--	1000
Monobromobiphenyl	mg/kg	EN 62321-6: 2015, GC-MS	N.D.	5	--
Dibromobiphenyl	mg/kg	EN 62321-6: 2015, GC-MS	N.D.	5	--
Tribromobiphenyl	mg/kg	EN 62321-6: 2015, GC-MS	N.D.	5	--
Tetrabromobiphenyl	mg/kg	EN 62321-6: 2015, GC-MS	N.D.	5	--
Pentabromobiphenyl	mg/kg	EN 62321-6: 2015, GC-MS	N.D.	5	--
Hexabromobiphenyl	mg/kg	EN 62321-6: 2015, GC-MS	N.D.	5	--
Heptabromobiphenyl	mg/kg	EN 62321-6: 2015, GC-MS	N.D.	5	--
Octabromobiphenyl	mg/kg	EN 62321-6: 2015, GC-MS	N.D.	5	--
Nonabromobiphenyl	mg/kg	EN 62321-6: 2015, GC-MS	N.D.	5	--
Decabromobiphenyl	mg/kg	EN 62321-6: 2015, GC-MS	N.D.	5	--
Sum of PBDEs	mg/kg	EN 62321-6: 2015, GC-MS	N.D.	5	1000
Monobromodiphenyl ether	mg/kg	EN 62321-6: 2015, GC-MS	N.D.	5	--
Dibromodiphenyl ether	mg/kg	EN 62321-6: 2015, GC-MS	N.D.	5	--
Tribromodiphenyl ether	mg/kg	EN 62321-6: 2015, GC-MS	N.D.	5	--
Tetrabromodiphenyl ether	mg/kg	EN 62321-6: 2015, GC-MS	N.D.	5	--
Pentabromodiphenyl ether	mg/kg	EN 62321-6: 2015, GC-MS	N.D.	5	--
Hexabromodiphenyl ether	mg/kg	EN 62321-6: 2015, GC-MS	N.D.	5	--
Heptabromodiphenyl ether	mg/kg	EN 62321-6: 2015, GC-MS	N.D.	5	--
Octabromodiphenyl ether	mg/kg	EN 62321-6: 2015, GC-MS	N.D.	5	--
Nonabromodiphenyl ether	mg/kg	EN 62321-6: 2015, GC-MS	N.D.	5	--
--Decabromodiphenyl ether	mg/kg	EN 62321-6: 2015, GC-MS	N.D.	5	--
Dibutyl Phthalate(DBP)	mg/kg	EN 62321-8:2017, GC-MS	N.D.	50	1000
Benzylbutyl Phthalate(BBP)	mg/kg	EN 62321-8:2017, GC-MS	N.D.	50	1000
Di-(2-ethylhexyl) Phthalate(DEHP)	mg/kg	EN 62321-8:2017, GC-MS	N.D.	50	1000
Diisobutyl phthalate (DIBP)	mg/kg	EN 62321-8:2017, GC-MS	N.D.	50	1000

Test Result(No.22):

Test Item(s)	Unit	Test Method(Reference)	Result	MDL	Limit
Cadmium(Cd)	mg/kg	EN 62321-5: 2013, ICP-OES	N.D.	2	100
Lead(Pb)	mg/kg	EN 62321-5: 2013, ICP-OES	N.D.	2	1000
Mercury(Hg)	mg/kg	EN 62321-4:2013+A1:2017, ICP-OES	N.D.	2	1000
Hexavalent Chromium(CrVI)	mg/kg	EN 62321-7-1:2015, EN 62321-7-2:2017, UV-Vis	N.D.	2	1000
Sum of PBBs	mg/kg	EN 62321-6: 2015, GC-MS	N.D.	--	1000
Monobromobiphenyl	mg/kg	EN 62321-6: 2015, GC-MS	N.D.	5	--
Dibromobiphenyl	mg/kg	EN 62321-6: 2015, GC-MS	N.D.	5	--
Tribromobiphenyl	mg/kg	EN 62321-6: 2015, GC-MS	N.D.	5	--
Tetrabromobiphenyl	mg/kg	EN 62321-6: 2015, GC-MS	N.D.	5	--
Pentabromobiphenyl	mg/kg	EN 62321-6: 2015, GC-MS	N.D.	5	--
Hexabromobiphenyl	mg/kg	EN 62321-6: 2015, GC-MS	N.D.	5	--
Heptabromobiphenyl	mg/kg	EN 62321-6: 2015, GC-MS	N.D.	5	--
Octabromobiphenyl	mg/kg	EN 62321-6: 2015, GC-MS	N.D.	5	--
Nonabromobiphenyl	mg/kg	EN 62321-6: 2015, GC-MS	N.D.	5	--
Decabromobiphenyl	mg/kg	EN 62321-6: 2015, GC-MS	N.D.	5	--
Sum of PBDEs	mg/kg	EN 62321-6: 2015, GC-MS	N.D.	5	1000
Monobromodiphenyl ether	mg/kg	EN 62321-6: 2015, GC-MS	N.D.	5	--
Dibromodiphenyl ether	mg/kg	EN 62321-6: 2015, GC-MS	N.D.	5	--
Tribromodiphenyl ether	mg/kg	EN 62321-6: 2015, GC-MS	N.D.	5	--
Tetrabromodiphenyl ether	mg/kg	EN 62321-6: 2015, GC-MS	N.D.	5	--
Pentabromodiphenyl ether	mg/kg	EN 62321-6: 2015, GC-MS	N.D.	5	--
Hexabromodiphenyl ether	mg/kg	EN 62321-6: 2015, GC-MS	N.D.	5	--
Heptabromodiphenyl ether	mg/kg	EN 62321-6: 2015, GC-MS	N.D.	5	--
Octabromodiphenyl ether	mg/kg	EN 62321-6: 2015, GC-MS	N.D.	5	--
Nonabromodiphenyl ether	mg/kg	EN 62321-6: 2015, GC-MS	N.D.	5	--
--Decabromodiphenyl ether	mg/kg	EN 62321-6: 2015, GC-MS	N.D.	5	--
Dibutyl Phthalate(DBP)	mg/kg	EN 62321-8:2017, GC-MS	N.D.	50	1000
Benzylbutyl Phthalate(BBP)	mg/kg	EN 62321-8:2017, GC-MS	N.D.	50	1000
Di-(2-ethylhexyl) Phthalate(DEHP)	mg/kg	EN 62321-8:2017, GC-MS	N.D.	50	1000
Diisobutyl phthalate (DIBP)	mg/kg	EN 62321-8:2017, GC-MS	N.D.	50	1000

Test Result(No.23):

Test Item(s)	Unit	Test Method(Reference)	Result	MDL	Limit
Cadmium(Cd)	mg/kg	EN 62321-5: 2013, ICP-OES	N.D.	2	100
Lead(Pb)	mg/kg	EN 62321-5: 2013, ICP-OES	N.D.	2	1000
Mercury(Hg)	mg/kg	EN 62321-4:2013+A1:2017, ICP-OES	N.D.	2	1000
Hexavalent Chromium(CrVI)	mg/kg	EN 62321-7-1:2015, EN 62321-7-2:2017, UV-Vis	N.D.	2	1000
Sum of PBBs	mg/kg	EN 62321-6: 2015, GC-MS	N.D.	--	1000
Monobromobiphenyl	mg/kg	EN 62321-6: 2015, GC-MS	N.D.	5	--
Dibromobiphenyl	mg/kg	EN 62321-6: 2015, GC-MS	N.D.	5	--
Tribromobiphenyl	mg/kg	EN 62321-6: 2015, GC-MS	N.D.	5	--
Tetrabromobiphenyl	mg/kg	EN 62321-6: 2015, GC-MS	N.D.	5	--
Pentabromobiphenyl	mg/kg	EN 62321-6: 2015, GC-MS	N.D.	5	--
Hexabromobiphenyl	mg/kg	EN 62321-6: 2015, GC-MS	N.D.	5	--
Heptabromobiphenyl	mg/kg	EN 62321-6: 2015, GC-MS	N.D.	5	--
Octabromobiphenyl	mg/kg	EN 62321-6: 2015, GC-MS	N.D.	5	--
Nonabromobiphenyl	mg/kg	EN 62321-6: 2015, GC-MS	N.D.	5	--
Decabromobiphenyl	mg/kg	EN 62321-6: 2015, GC-MS	N.D.	5	--
Sum of PBDEs	mg/kg	EN 62321-6: 2015, GC-MS	N.D.	5	1000
Monobromodiphenyl ether	mg/kg	EN 62321-6: 2015, GC-MS	N.D.	5	--
Dibromodiphenyl ether	mg/kg	EN 62321-6: 2015, GC-MS	N.D.	5	--
Tribromodiphenyl ether	mg/kg	EN 62321-6: 2015, GC-MS	N.D.	5	--
Tetrabromodiphenyl ether	mg/kg	EN 62321-6: 2015, GC-MS	N.D.	5	--
Pentabromodiphenyl ether	mg/kg	EN 62321-6: 2015, GC-MS	N.D.	5	--
Hexabromodiphenyl ether	mg/kg	EN 62321-6: 2015, GC-MS	N.D.	5	--
Heptabromodiphenyl ether	mg/kg	EN 62321-6: 2015, GC-MS	N.D.	5	--
Octabromodiphenyl ether	mg/kg	EN 62321-6: 2015, GC-MS	N.D.	5	--
Nonabromodiphenyl ether	mg/kg	EN 62321-6: 2015, GC-MS	N.D.	5	--
--Decabromodiphenyl ether	mg/kg	EN 62321-6: 2015, GC-MS	N.D.	5	--
Dibutyl Phthalate(DBP)	mg/kg	EN 62321-8:2017, GC-MS	N.D.	50	1000
Benzylbutyl Phthalate(BBP)	mg/kg	EN 62321-8:2017, GC-MS	N.D.	50	1000
Di-(2-ethylhexyl) Phthalate(DEHP)	mg/kg	EN 62321-8:2017, GC-MS	N.D.	50	1000
Diisobutyl phthalate (DIBP)	mg/kg	EN 62321-8:2017, GC-MS	N.D.	50	1000

Test Result(No.24):

Test Item(s)	Unit	Test Method(Reference)	Result	MDL	Limit
Cadmium(Cd)	mg/kg	EN 62321-5: 2013, ICP-OES	N.D.	2	100
Lead(Pb)	mg/kg	EN 62321-5: 2013, ICP-OES	N.D.	2	1000
Mercury(Hg)	mg/kg	EN 62321-4:2013+A1:2017, ICP-OES	N.D.	2	1000
Hexavalent Chromium(CrVI)	mg/kg	EN 62321-7-1:2015, EN 62321-7-2:2017, UV-Vis	N.D.	2	1000
Sum of PBBs	mg/kg	EN 62321-6: 2015, GC-MS	N.D.	--	1000
Monobromobiphenyl	mg/kg	EN 62321-6: 2015, GC-MS	N.D.	5	--
Dibromobiphenyl	mg/kg	EN 62321-6: 2015, GC-MS	N.D.	5	--
Tribromobiphenyl	mg/kg	EN 62321-6: 2015, GC-MS	N.D.	5	--
Tetrabromobiphenyl	mg/kg	EN 62321-6: 2015, GC-MS	N.D.	5	--
Pentabromobiphenyl	mg/kg	EN 62321-6: 2015, GC-MS	N.D.	5	--
Hexabromobiphenyl	mg/kg	EN 62321-6: 2015, GC-MS	N.D.	5	--
Heptabromobiphenyl	mg/kg	EN 62321-6: 2015, GC-MS	N.D.	5	--
Octabromobiphenyl	mg/kg	EN 62321-6: 2015, GC-MS	N.D.	5	--
Nonabromobiphenyl	mg/kg	EN 62321-6: 2015, GC-MS	N.D.	5	--
Decabromobiphenyl	mg/kg	EN 62321-6: 2015, GC-MS	N.D.	5	--
Sum of PBDEs	mg/kg	EN 62321-6: 2015, GC-MS	N.D.	5	1000
Monobromodiphenyl ether	mg/kg	EN 62321-6: 2015, GC-MS	N.D.	5	--
Dibromodiphenyl ether	mg/kg	EN 62321-6: 2015, GC-MS	N.D.	5	--
Tribromodiphenyl ether	mg/kg	EN 62321-6: 2015, GC-MS	N.D.	5	--
Tetrabromodiphenyl ether	mg/kg	EN 62321-6: 2015, GC-MS	N.D.	5	--
Pentabromodiphenyl ether	mg/kg	EN 62321-6: 2015, GC-MS	N.D.	5	--
Hexabromodiphenyl ether	mg/kg	EN 62321-6: 2015, GC-MS	N.D.	5	--
Heptabromodiphenyl ether	mg/kg	EN 62321-6: 2015, GC-MS	N.D.	5	--
Octabromodiphenyl ether	mg/kg	EN 62321-6: 2015, GC-MS	N.D.	5	--
Nonabromodiphenyl ether	mg/kg	EN 62321-6: 2015, GC-MS	N.D.	5	--
--Decabromodiphenyl ether	mg/kg	EN 62321-6: 2015, GC-MS	N.D.	5	--
Dibutyl Phthalate(DBP)	mg/kg	EN 62321-8:2017, GC-MS	N.D.	50	1000
Benzylbutyl Phthalate(BBP)	mg/kg	EN 62321-8:2017, GC-MS	N.D.	50	1000
Di-(2-ethylhexyl) Phthalate(DEHP)	mg/kg	EN 62321-8:2017, GC-MS	N.D.	50	1000
Diisobutyl phthalate (DIBP)	mg/kg	EN 62321-8:2017, GC-MS	N.D.	50	1000

Test Result(No.25):

Test Item(s)	Unit	Test Method(Reference)	Result	MDL	Limit
Cadmium(Cd)	mg/kg	EN 62321-5: 2013, ICP-OES	N.D.	2	100
Lead(Pb)	mg/kg	EN 62321-5: 2013, ICP-OES	N.D.	2	1000
Mercury(Hg)	mg/kg	EN 62321-4:2013+A1:2017, ICP-OES	N.D.	2	1000
Hexavalent Chromium(CrVI)	mg/kg	EN 62321-7-1:2015, EN 62321-7-2:2017, UV-Vis	N.D.	2	1000
Sum of PBBs	mg/kg	EN 62321-6: 2015, GC-MS	N.D.	--	1000
Monobromobiphenyl	mg/kg	EN 62321-6: 2015, GC-MS	N.D.	5	--
Dibromobiphenyl	mg/kg	EN 62321-6: 2015, GC-MS	N.D.	5	--
Tribromobiphenyl	mg/kg	EN 62321-6: 2015, GC-MS	N.D.	5	--
Tetrabromobiphenyl	mg/kg	EN 62321-6: 2015, GC-MS	N.D.	5	--
Pentabromobiphenyl	mg/kg	EN 62321-6: 2015, GC-MS	N.D.	5	--
Hexabromobiphenyl	mg/kg	EN 62321-6: 2015, GC-MS	N.D.	5	--
Heptabromobiphenyl	mg/kg	EN 62321-6: 2015, GC-MS	N.D.	5	--
Octabromobiphenyl	mg/kg	EN 62321-6: 2015, GC-MS	N.D.	5	--
Nonabromobiphenyl	mg/kg	EN 62321-6: 2015, GC-MS	N.D.	5	--
Decabromobiphenyl	mg/kg	EN 62321-6: 2015, GC-MS	N.D.	5	--
Sum of PBDEs	mg/kg	EN 62321-6: 2015, GC-MS	N.D.	5	1000
Monobromodiphenyl ether	mg/kg	EN 62321-6: 2015, GC-MS	N.D.	5	--
Dibromodiphenyl ether	mg/kg	EN 62321-6: 2015, GC-MS	N.D.	5	--
Tribromodiphenyl ether	mg/kg	EN 62321-6: 2015, GC-MS	N.D.	5	--
Tetrabromodiphenyl ether	mg/kg	EN 62321-6: 2015, GC-MS	N.D.	5	--
Pentabromodiphenyl ether	mg/kg	EN 62321-6: 2015, GC-MS	N.D.	5	--
Hexabromodiphenyl ether	mg/kg	EN 62321-6: 2015, GC-MS	N.D.	5	--
Heptabromodiphenyl ether	mg/kg	EN 62321-6: 2015, GC-MS	N.D.	5	--
Octabromodiphenyl ether	mg/kg	EN 62321-6: 2015, GC-MS	N.D.	5	--
Nonabromodiphenyl ether	mg/kg	EN 62321-6: 2015, GC-MS	N.D.	5	--
--Decabromodiphenyl ether	mg/kg	EN 62321-6: 2015, GC-MS	N.D.	5	--
Dibutyl Phthalate(DBP)	mg/kg	EN 62321-8:2017, GC-MS	N.D.	50	1000
Benzylbutyl Phthalate(BBP)	mg/kg	EN 62321-8:2017, GC-MS	N.D.	50	1000
Di-(2-ethylhexyl) Phthalate(DEHP)	mg/kg	EN 62321-8:2017, GC-MS	N.D.	50	1000
Diisobutyl phthalate (DIBP)	mg/kg	EN 62321-8:2017, GC-MS	N.D.	50	1000

Test Result(No.26):

Test Item(s)	Unit	Test Method(Reference)	Result	MDL	Limit
Cadmium(Cd)	mg/kg	EN 62321-5: 2013, ICP-OES	N.D.	2	100
Lead(Pb)	mg/kg	EN 62321-5: 2013, ICP-OES	N.D.	2	1000
Mercury(Hg)	mg/kg	EN 62321-4:2013+A1:2017, ICP-OES	N.D.	2	1000
Hexavalent Chromium(CrVI)	mg/kg	EN 62321-7-1:2015, EN 62321-7-2:2017, UV-Vis	N.D.	2	1000
Sum of PBBs	mg/kg	EN 62321-6: 2015, GC-MS	N.D.	--	1000
Monobromobiphenyl	mg/kg	EN 62321-6: 2015, GC-MS	N.D.	5	--
Dibromobiphenyl	mg/kg	EN 62321-6: 2015, GC-MS	N.D.	5	--
Tribromobiphenyl	mg/kg	EN 62321-6: 2015, GC-MS	N.D.	5	--
Tetrabromobiphenyl	mg/kg	EN 62321-6: 2015, GC-MS	N.D.	5	--
Pentabromobiphenyl	mg/kg	EN 62321-6: 2015, GC-MS	N.D.	5	--
Hexabromobiphenyl	mg/kg	EN 62321-6: 2015, GC-MS	N.D.	5	--
Heptabromobiphenyl	mg/kg	EN 62321-6: 2015, GC-MS	N.D.	5	--
Octabromobiphenyl	mg/kg	EN 62321-6: 2015, GC-MS	N.D.	5	--
Nonabromobiphenyl	mg/kg	EN 62321-6: 2015, GC-MS	N.D.	5	--
Decabromobiphenyl	mg/kg	EN 62321-6: 2015, GC-MS	N.D.	5	--
Sum of PBDEs	mg/kg	EN 62321-6: 2015, GC-MS	N.D.	5	1000
Monobromodiphenyl ether	mg/kg	EN 62321-6: 2015, GC-MS	N.D.	5	--
Dibromodiphenyl ether	mg/kg	EN 62321-6: 2015, GC-MS	N.D.	5	--
Tribromodiphenyl ether	mg/kg	EN 62321-6: 2015, GC-MS	N.D.	5	--
Tetrabromodiphenyl ether	mg/kg	EN 62321-6: 2015, GC-MS	N.D.	5	--
Pentabromodiphenyl ether	mg/kg	EN 62321-6: 2015, GC-MS	N.D.	5	--
Hexabromodiphenyl ether	mg/kg	EN 62321-6: 2015, GC-MS	N.D.	5	--
Heptabromodiphenyl ether	mg/kg	EN 62321-6: 2015, GC-MS	N.D.	5	--
Octabromodiphenyl ether	mg/kg	EN 62321-6: 2015, GC-MS	N.D.	5	--
Nonabromodiphenyl ether	mg/kg	EN 62321-6: 2015, GC-MS	N.D.	5	--
--Decabromodiphenyl ether	mg/kg	EN 62321-6: 2015, GC-MS	N.D.	5	--
Dibutyl Phthalate(DBP)	mg/kg	EN 62321-8:2017, GC-MS	N.D.	50	1000
Benzylbutyl Phthalate(BBP)	mg/kg	EN 62321-8:2017, GC-MS	N.D.	50	1000
Di-(2-ethylhexyl) Phthalate(DEHP)	mg/kg	EN 62321-8:2017, GC-MS	N.D.	50	1000
Diisobutyl phthalate (DIBP)	mg/kg	EN 62321-8:2017, GC-MS	N.D.	50	1000

Test Result(No.27):

Test Item(s)	Unit	Test Method(Reference)	Result	MDL	Limit
Cadmium(Cd)	mg/kg	EN 62321-5: 2013, ICP-OES	N.D.	2	100
Lead(Pb)	mg/kg	EN 62321-5: 2013, ICP-OES	N.D.	2	1000
Mercury(Hg)	mg/kg	EN 62321-4:2013+A1:2017, ICP-OES	N.D.	2	1000
Hexavalent Chromium(CrVI)	mg/kg	EN 62321-7-1:2015, EN 62321-7-2:2017, UV-Vis	N.D.	2	1000
Sum of PBBs	mg/kg	EN 62321-6: 2015, GC-MS	N.D.	--	1000
Monobromobiphenyl	mg/kg	EN 62321-6: 2015, GC-MS	N.D.	5	--
Dibromobiphenyl	mg/kg	EN 62321-6: 2015, GC-MS	N.D.	5	--
Tribromobiphenyl	mg/kg	EN 62321-6: 2015, GC-MS	N.D.	5	--
Tetrabromobiphenyl	mg/kg	EN 62321-6: 2015, GC-MS	N.D.	5	--
Pentabromobiphenyl	mg/kg	EN 62321-6: 2015, GC-MS	N.D.	5	--
Hexabromobiphenyl	mg/kg	EN 62321-6: 2015, GC-MS	N.D.	5	--
Heptabromobiphenyl	mg/kg	EN 62321-6: 2015, GC-MS	N.D.	5	--
Octabromobiphenyl	mg/kg	EN 62321-6: 2015, GC-MS	N.D.	5	--
Nonabromobiphenyl	mg/kg	EN 62321-6: 2015, GC-MS	N.D.	5	--
Decabromobiphenyl	mg/kg	EN 62321-6: 2015, GC-MS	N.D.	5	--
Sum of PBDEs	mg/kg	EN 62321-6: 2015, GC-MS	N.D.	5	1000
Monobromodiphenyl ether	mg/kg	EN 62321-6: 2015, GC-MS	N.D.	5	--
Dibromodiphenyl ether	mg/kg	EN 62321-6: 2015, GC-MS	N.D.	5	--
Tribromodiphenyl ether	mg/kg	EN 62321-6: 2015, GC-MS	N.D.	5	--
Tetrabromodiphenyl ether	mg/kg	EN 62321-6: 2015, GC-MS	N.D.	5	--
Pentabromodiphenyl ether	mg/kg	EN 62321-6: 2015, GC-MS	N.D.	5	--
Hexabromodiphenyl ether	mg/kg	EN 62321-6: 2015, GC-MS	N.D.	5	--
Heptabromodiphenyl ether	mg/kg	EN 62321-6: 2015, GC-MS	N.D.	5	--
Octabromodiphenyl ether	mg/kg	EN 62321-6: 2015, GC-MS	N.D.	5	--
Nonabromodiphenyl ether	mg/kg	EN 62321-6: 2015, GC-MS	N.D.	5	--
--Decabromodiphenyl ether	mg/kg	EN 62321-6: 2015, GC-MS	N.D.	5	--
Dibutyl Phthalate(DBP)	mg/kg	EN 62321-8:2017, GC-MS	N.D.	50	1000
Benzylbutyl Phthalate(BBP)	mg/kg	EN 62321-8:2017, GC-MS	N.D.	50	1000
Di-(2-ethylhexyl) Phthalate(DEHP)	mg/kg	EN 62321-8:2017, GC-MS	N.D.	50	1000
Diisobutyl phthalate (DIBP)	mg/kg	EN 62321-8:2017, GC-MS	N.D.	50	1000

航天检测技术（深圳）有限公司

广东省深圳市宝安区松岗街道沙浦洋涌工业区8路5号A1栋三楼

Aerospace Testing Technology (Shenzhen) Co., Ltd.

3/F, Block A1, No.5, 8th Road, Shapu Yangyong Industrial Park,

Songgang Street, Bao'an District, Shenzhen, Guangdong, China

Tel. (电话) : 0755-27781492

Fax. (传真) : 0755-27781492

Web. (网址) : www.ast-test.com

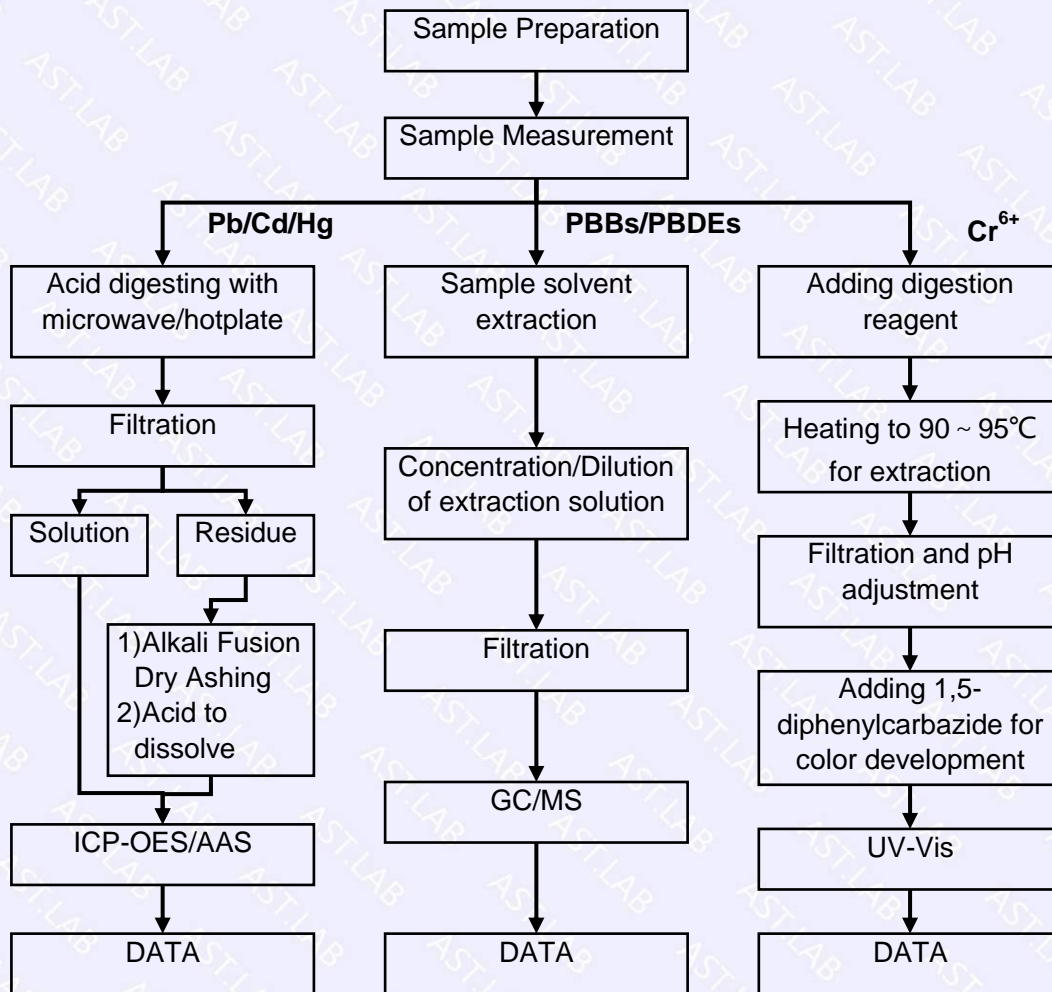
E-mail(邮箱) : ast@hangtianjc.com

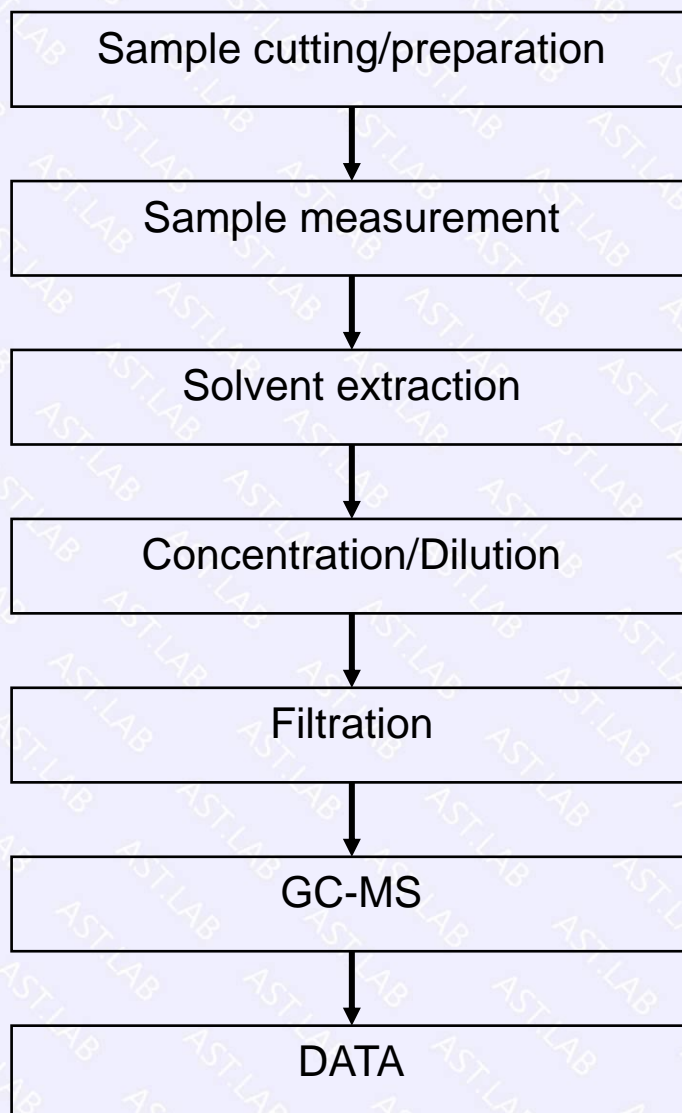
Test Result(No.28):

Test Item(s)	Unit	Test Method(Reference)	Result	MDL	Limit
Cadmium(Cd)	mg/kg	EN 62321-5: 2013, ICP-OES	N.D.	2	100
Lead(Pb)	mg/kg	EN 62321-5: 2013, ICP-OES	N.D.	2	1000
Mercury(Hg)	mg/kg	EN 62321-4:2013+A1:2017, ICP-OES	N.D.	2	1000
Hexavalent Chromium(CrVI)	mg/kg	EN 62321-7-1:2015, EN 62321-7-2:2017, UV-Vis	N.D.	2	1000
Sum of PBBs	mg/kg	EN 62321-6: 2015, GC-MS	N.D.	--	1000
Monobromobiphenyl	mg/kg	EN 62321-6: 2015, GC-MS	N.D.	5	--
Dibromobiphenyl	mg/kg	EN 62321-6: 2015, GC-MS	N.D.	5	--
Tribromobiphenyl	mg/kg	EN 62321-6: 2015, GC-MS	N.D.	5	--
Tetrabromobiphenyl	mg/kg	EN 62321-6: 2015, GC-MS	N.D.	5	--
Pentabromobiphenyl	mg/kg	EN 62321-6: 2015, GC-MS	N.D.	5	--
Hexabromobiphenyl	mg/kg	EN 62321-6: 2015, GC-MS	N.D.	5	--
Heptabromobiphenyl	mg/kg	EN 62321-6: 2015, GC-MS	N.D.	5	--
Octabromobiphenyl	mg/kg	EN 62321-6: 2015, GC-MS	N.D.	5	--
Nonabromobiphenyl	mg/kg	EN 62321-6: 2015, GC-MS	N.D.	5	--
Decabromobiphenyl	mg/kg	EN 62321-6: 2015, GC-MS	N.D.	5	--
Sum of PBDEs	mg/kg	EN 62321-6: 2015, GC-MS	N.D.	5	1000
Monobromodiphenyl ether	mg/kg	EN 62321-6: 2015, GC-MS	N.D.	5	--
Dibromodiphenyl ether	mg/kg	EN 62321-6: 2015, GC-MS	N.D.	5	--
Tribromodiphenyl ether	mg/kg	EN 62321-6: 2015, GC-MS	N.D.	5	--
Tetrabromodiphenyl ether	mg/kg	EN 62321-6: 2015, GC-MS	N.D.	5	--
Pentabromodiphenyl ether	mg/kg	EN 62321-6: 2015, GC-MS	N.D.	5	--
Hexabromodiphenyl ether	mg/kg	EN 62321-6: 2015, GC-MS	N.D.	5	--
Heptabromodiphenyl ether	mg/kg	EN 62321-6: 2015, GC-MS	N.D.	5	--
Octabromodiphenyl ether	mg/kg	EN 62321-6: 2015, GC-MS	N.D.	5	--
Nonabromodiphenyl ether	mg/kg	EN 62321-6: 2015, GC-MS	N.D.	5	--
--Decabromodiphenyl ether	mg/kg	EN 62321-6: 2015, GC-MS	N.D.	5	--
Dibutyl Phthalate(DBP)	mg/kg	EN 62321-8:2017, GC-MS	N.D.	50	1000
Benzylbutyl Phthalate(BBP)	mg/kg	EN 62321-8:2017, GC-MS	N.D.	50	1000
Di-(2-ethylhexyl) Phthalate(DEHP)	mg/kg	EN 62321-8:2017, GC-MS	N.D.	50	1000
Diisobutyl phthalate (DIBP)	mg/kg	EN 62321-8:2017, GC-MS	N.D.	50	1000

- Note:**
1. mg/kg= ppm
 2. N.D.= No Detection(<MDL)
 3. MDL = Method Detection Limit
 4. -- = No Testing

ATTACHMENT: Cd/Pb/Hg/Cr⁶⁺/PBBs&PBDEs Flow Chart



ATTACHMENT: Phthalate Testing Flow Chart

Sample photo:

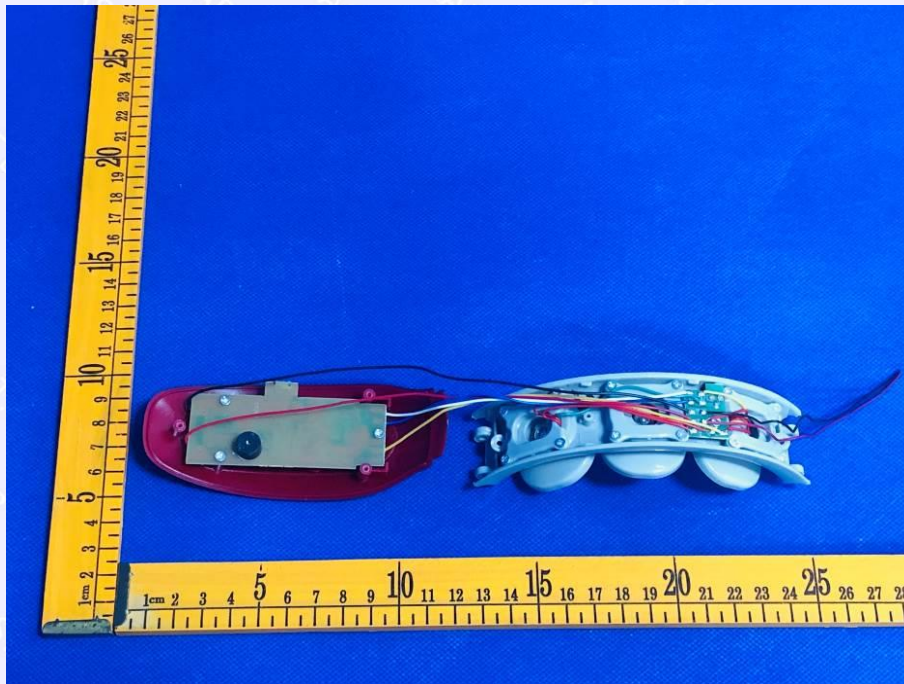
EUT Photo 1



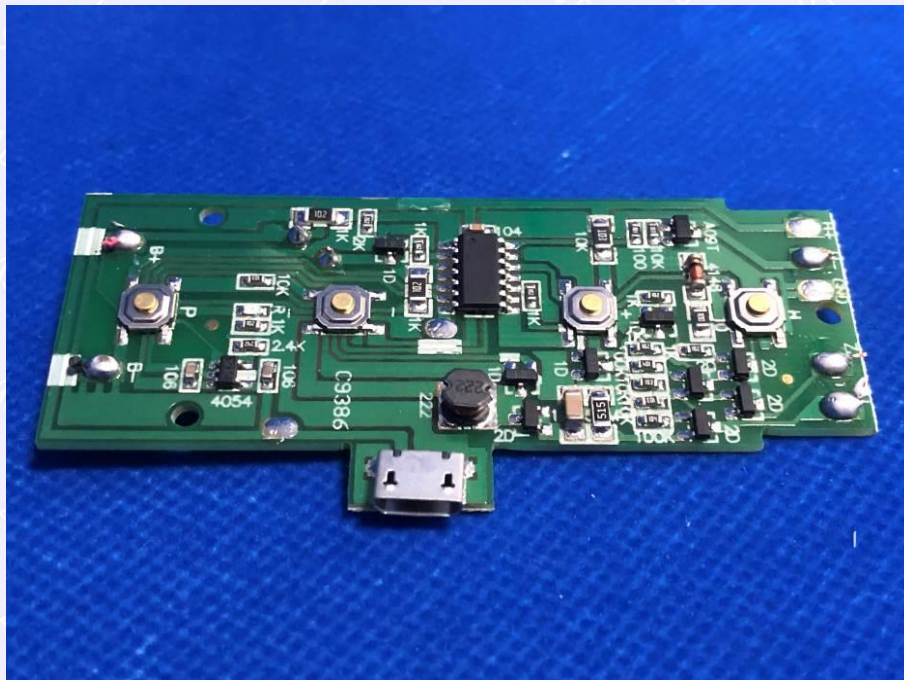
EUT Photo 2



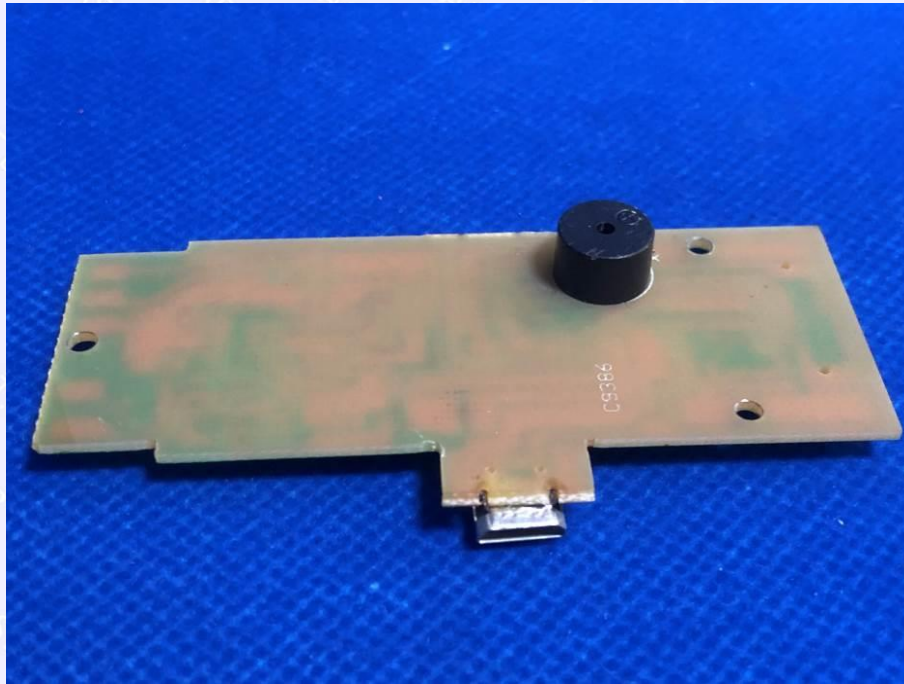
EUT Photo 3



EUT Photo 4



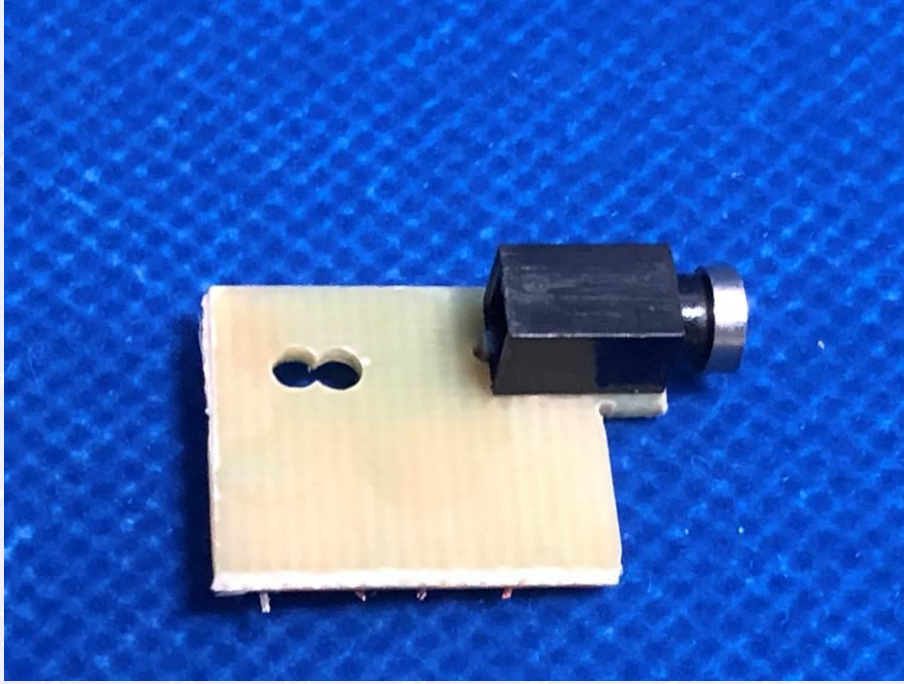
EUT Photo 5



EUT Photo 6



EUT Photo 7



****End of Report****